

# Central New York Aquarium Society Membership Handbook



**Reviewed and updated December 2022**

## Table of Contents

<i>A Brief History of the Central New York Aquarium Society, Inc.</i> .....	- 4 -
<b>GENERAL RULES</b> .....	- 5 -
RAFFLE .....	- 5 -
MONTHLY AUCTION .....	- 5 -
BOWL SHOW .....	- 5 -
ANNUAL AUCTION RULES .....	- 6 -
<b>BREEDER'S AWARD PROGRAM (BAP)</b> .....	- 8 -
PURPOSES .....	- 8 -
ELIGIBILITY .....	- 8 -
COMMITTEE .....	- 8 -
AWARDS.....	- 8 -
SPAWNING REQUIREMENTS .....	- 9 -
ADDITIONAL CRITERIA .....	- 9 -
GENERAL GUIDE TO FISH CLASSIFICATION .....	- 12 -
CLASS A.....	- 13 -
CLASS B.....	- 13 -
CLASS C.....	- 16 -
CLASS D.....	- 20 -
CLASS E .....	- 21 -
SPECIALTY CLASS.....	- 21 -
INVERTEBRATES .....	- 22 -
<b>AQUATIC HORTICULTURE AWARD PROGRAM (AHAP)</b> .....	- 23 -
PURPOSES .....	- 23 -
ELIGIBILITY .....	- 23 -
COMMITTEE .....	- 23 -
AWARDS.....	- 23 -
REPRODUCTION REQUIREMENTS.....	- 24 -
ADDITIONAL CRITERIA .....	- 24 -
<b>WRITER'S AWARD PROGRAM (WAP)</b> .....	- 27 -
PURPOSES .....	- 27 -
ELIGIBILITY .....	- 27 -
COMMITTEE .....	- 27 -
AWARDS.....	- 27 -
PROFESSIONAL AWARD .....	- 28 -

**POINTS ACCUMULATION ..... - 28 -**

**MISCELLANEOUS FORMS ..... - 30 -**

**AQUATIC HORTICULTURISTS AWARD PROGRAM (AHAP) REPORT FORM ..... - 31 -**  
    CNYAS AHAP SPECIES AWARD FORM..... - 32 -

**BREEDER'S AWARD PROGRAM (BAP) REPORT FORM ..... - 33 -**  
    CNYAS BAP SPECIES AWARD FORM ..... - 34 -

**MONTHLY MEETING AUCTION FORM ..... - 35 -**

**PAST OFFICERS & STAFF ..... - 36 -**

**BOARD OF DIRECTORS ..... - 37 -**

**COMMITTEES ..... - 38 -**

**MISCELLANEOUS COMMITTEES AND EVENTS..... - 41 -**

**SPECIAL AWARDS ..... - 42 -**

## **A Brief History of the Central New York Aquarium Society, Inc.**

In 1975 Dave Gerber, owner of Mini Pet World Pet Shop located on Erie Blvd East, got a group of tropical fish hobbyists together at his store to discuss the possibility of having an aquarium society in the central NY area. The group was very enthusiastic to see this happen. So in September 1976, the first organized meeting of the Central New York Aquarium Society took place in the basement of the Lincoln First Bank on Genesee Street in Dewitt NY.

The club publication, called the *Central New York Aquarium Society Bulletin*, debuted in September 1976 and one year later was renamed *The Reflector*.

After a few years the membership had increased, and the small basement room was not large enough to accommodate everyone comfortably. A new location was found at the Liverpool Public Library in Liverpool, NY and that was the CNYAS home for many years. During the stay at the library our members maintained two fish tanks for the enjoyment of the library patrons. Renovations at the library made it necessary for CNYAS to move its monthly meetings once again.

In 2008 the members began meeting at the Dewitt Community Center in East Syracuse.

CNYAS is a non-profit organization under section 501(c)(3) of the Internal Revenue Code. It first applied and received this designation along with tax exempt status in 1977. Recertification occurred in 2011.

In 1987 the organization was incorporated, and its non-profit tax status was amended to reflect the incorporation in 2010. The official name is Central New York Aquarium Society, Inc.

# GENERAL RULES

## RAFFLE

At most monthly meetings a raffle is held of an item related to the tropical fish hobby. Tickets are \$1 each or 6/\$5 and are on sale at break time.

## MONTHLY AUCTION

We also have an auction at every general meeting. This gives everyone a chance to buy supplies and fish or to see something they have on hand. Everyone can bid on an item as many times as they want. The person who offers the highest price then pays the treasurer.

If you wish to sell something at the auction, you collect the proceeds from the treasurer by the next meeting; 25% (members) 30% (non-members) of the amount is kept for the benefit of the society. Be sure to wrap the fish securely and in bags with plenty of air. Auction forms should be obtained from the Treasurer prior to the auction. Mark all information about the fish on the outside of the item and be careful of temperature changes. Any items associated with the aquarium hobby may be entered. All mechanical devices must be labeled if they have any defects.

Items raffled might be aquarium pumps, heaters, filters, plants, fish, live food cultures, aquariums, books, etc. Donations are always welcome and will be indicated by the auctioneer.

## BOWL SHOW (Revised 2022)

The primary purpose of the bowl show is educational. It enables members to see and examine different species of fish, it familiarizes members as to judging procedures, and it encourages the showing and keeping of fish.

1. The Bowl Show Chairman shall have complete charge of all entries. Any unusual requirements or exceptions or questions about these rules must be discussed with the chairperson. The decision of the chairperson is FINAL.
2. All entries shall be in containers having at least 2 flat sides with an unlighted cover (a clear plastic or glass cover is desirable). The use of airstones will not be permitted.
3. All containers must be devoid of contents, except for water and fish. Except for foils, a solid-colored background will be allowed.
4. There will be two classes: the Fish of the Month class, and an Open class.
5. If you have a family membership you may accumulate points in one of the following ways: all points are placed under the family name OR points are kept separately for each family member. This determination must be made at the first bowl show of the year.
6. Only members in good standing may enter fish.
7. The exhibitor must be present to enter fish in the show. Live and digital entries are accepted.
8. Dealers may enter "for display only" under the shop's name.

9. There will be three judges selected for each month by the chairperson. Judges cannot be related to Bowl Show participants. The judges will rank the fish by class (i.e. 1 - the best, 2 – 2<sup>nd</sup> best, etc.).
10. A member may enter the same fish or pair of fish as many times as desired, provided that the fish do not win a 1<sup>st</sup>, 2<sup>nd</sup>, or 3<sup>rd</sup> place award. In such cases, the exhibitor may not enter the same fish again until Super Bowl.
11. A member may enter fish in Fish of the Month class and Open class.
12. A small label must be attached to each entry giving the scientific name. The common name is desirable but optional.
13. Entries must be in the possession of the owner for one month prior to the show.
14. Entries must be brought in for display by the start of the meeting (7:00 p.m.); no entries will be accepted after the judging begins.
15. In the event that a bowl show consists of more than one class, a fish can be entered in only one of the available classes.
16. The decision of the judges is FINAL. No diseased, malformed or mutilated fish will be judged. Two of the judges must agree to disqualify a fish.
17. Point awards:
  - First Place – 20 points
  - Second Place – 15 points
  - Third Place – 10 points
  - Participating – 1 point/class

Any individual showing a fish will be awarded 1 point per fish (maximum 2 points per show). For example, John Smith brings in two fish, one for the open class and one for the goldfish class. He receives 2 points for entering two

fish. The goldfish takes second place for 15 points. His total for the show would be 17 points.

18. The Super Bowl Show is held in May. It consists of any entries that placed first, second or third during the show year. The top three entries receive ribbons. Entrants may bring up to three ribbon-winning fish to the Super Bowl Show.

### **ANNUAL AUCTION RULES** **(Revised 2022)**

**SELLER REGISTRATION.** Obtain your seller's ID and auction form by emailing a request to [cnyasannualauction@gmail.com](mailto:cnyasannualauction@gmail.com).

List items consecutively on the auction form with no empty lines between items. The ID# on the form should correspond with the label on the item. Completed sheet(s) are to be taken to the registration table prior to the start of bidding. THERE IS A LIMIT OF 5 ON SIMILAR HARD GOODS (examples: heaters, pumps, filters, etc.) AND 5 BAGS PER SPECIE OF FISH OR PLANT. No exceptions!

We are using the "10 table" system so place your item on the table that corresponds with the last number of your item's ID. For example, on Table 1 place items 1,11,21, etc.; on Table 2 place items 2,12,22 etc. Items on Table 1 will be auctioned first, then items on Table 2. After items on Table 2 have been auctioned, the order that the remaining tables will be auctioned will be selected at random. No items can be renumbered or moved. Buyers who wish to have items auctioned earlier will pay a \$2 fee to "fast track" an item. Items brought in late will be auctioned off later in the afternoon.

Equipment: Label each item and mark any equipment that is not working properly or is not in its proper brand name box (e.g., a Supreme heater box contains a Supreme heater).

Livestock: Bag & label fish/plants properly in bags designed to hold fish, typically obtained from pet shops or from our meetings. Double bagging is recommended. Food storage bags or "Ziploc" bags will NOT be accepted. Fish labeled as a pair must be a male and a female. A **\$2 fee will be charged if any re-bagging is necessary.**

Payments to sellers: A check and a copy of your "Seller Sheet" will be mailed out within 5 business days. Members receive 75% of selling price; non-members 70%. At the end of the auction sellers may apply what they have purchased against what they have sold. If the individual buys more than he has sold, he will pay the difference at checkout. If the person is due money, the club will send a check by mail.

**BUYER REGISTRATION** is done the day of the auction. Buyers must preregister as there are NO cash transactions on the floor. Fill out the Buyer Registration Form and receive your buyer number and bidder sheet. This sheet is to be held up for each item where you are the high bidder. Any buyer that wishes to leave the auction and return later on must turn in his sheet and number and pay for any items purchased.

When returning, the buyer will need to re-register and obtain a new number.

Checking Out & Payments: Go to the cashier's table and obtain a computer printout of the items you purchased. The treasurer will accept checks from club members only, all others must pay in CASH.

Once the auctioneer starts selling items from the last table number pulled from the lottery, checking out will be suspended. After the last item is sold, 15 minutes will be allowed for the computer operators to enter the remaining tags before checking out is resumed.

Other:

- Club donations can be identified by an ID beginning with "C".
- Only auction workers may remove items from a table.
- Items are auctioned in \$1 increments or left to the discretion of the auctioneer.
- Items not picked up at the end of the auction become the property of the CNYAS.
- CNYAS is not responsible for equipment or livestock purchased at the auction. Any problems are to be resolved between the buyer and the seller.
- Computer operators will be keeping track of buyer ID numbers, items and prices.
- CNYAS will deny the sale of livestock that are prohibited by state or federal law.

# BREEDER'S AWARD PROGRAM (BAP)

Updated December 2022

## PURPOSES

- A. To recognize outstanding achievement in the breeding of aquarium fish.
  - B. To encourage spawning of aquarium fish.
  - C. To share knowledge of breeding techniques.
  - D. To enable more members to participate in club activities.
1. A date for the change or modification is chosen by the Committee.
  2. The proposed change, with the effective date, will be published in the club bulletin at least 3 months preceding the effective change.

## AWARDS

### ELIGIBILITY

All members are eligible for the Breeder's Award Program. If any member should not renew his/her membership, his/her points will be kept on the 'inactive' list until such time that they renew their membership again.

### COMMITTEE

- A. The Breeder's Award Committee will consist of a Chairman and at least two additional appointed members.
- B. The duties of the Committee will consist of witnessing spawnings and fry as outlined below, maintaining an accurate record of the point standings, reporting these to the membership and obtaining and presenting awards.
- C. From time to time the Committee may feel that certain changes or modifications in the rules may be necessary. The Committee will adhere to the following procedure if changes are to be made to the current BAP. No changes or modifications will be retroactive:

### BREEDER AWARD: 50 points

The aquarist must accumulate a total of 50 points, 20 from Class B and the remaining 30 from any class.

### ADVANCED BREEDER: 100 points

The aquarist must accumulate a total of 100 points, in addition to completing the Breeder Award requirements an additional 50 points must be earned (30 from Class C or D, the remaining from any class).

### EXPERT BREEDER: 200 points

The aquarist must accumulate a total of 200 points. Breeder's Award, Advanced Breeder plus 30 points must be earned from Class C or D.

### MASTER BREEDER: 300 points

The aquarist must accumulate a total of 300 points. Expert Breeder requirements plus 30 points from any C or D not spawned for the Expert Breeder's level.

### GRAND MASTER:

The aquarist must have completed the Master Status,



**AND**

must breed a total of 75 species (with the exception of snails), 2 of which are from the "Class D" list and 2 from the "Class E" list.

**OR**

must spawn a total of 75 species (excluding snails) including 2 from "Class D" while at the same time fill all 16 classes in the "Species Award" category.

**SPECIES AWARD:**

This separate award is based on the number of species spawned from the "Specialty Classification List." Any club member may participate in this achievement level as well as the regular BAP program. Points will still be awarded as per regular BAP rules. Any individual's verified spawnings from the Breeder's Award Program may be applied towards completing the requirements for this award. A separate plaque will be awarded for anyone completing a minimum of 11 of the 16 classes.

**BREEDER OF THE YEAR AWARD:**

Presented to the member who earns the most points in one award year. The award year runs from May 1 through April 30.

**SPAWNING REQUIREMENTS**

- A. CLASS A: An aquarist must spawn and raise at least 10 fry to 30 days of age or longer. Verification\* must be made by any club member.
- B. CLASS B: An aquarist must spawn and raise at least 10 fry to 30 days of age. Verification\* must be made by any member of the BAP Committee after the

fry are 30 days old either at the club meeting or at the aquarist's home.

- C. CLASS C: An aquarist must spawn and raise at least 10 fry to 30 days of age. Verification\* must be made by any member of the BAP Committee and a summary of these conditions under which the fish spawned may be presented either orally at a meeting or in writing for publication in the club bulletin at the discretion of the BAP Committee.
- D. CLASS D: Conditions of Class C apply. A summary of the breeding conditions must be presented either orally at a meeting or in written form for publication in the club bulletin. Also a member of the BAP Committee must witness the fry not more than one week after hatching and again when they are 30 days of age.
- E. CLASS E: Conditions of Class D apply. Class E points are assigned per BAP Fish List; however, after 6/86 a talk or article is necessary to qualify for Grand Master Status.

**IT IS NOT NECESSARY TO HAVE FISH  
WITNESSED AT EXACTLY 30 DAYS OF AGE,  
BUT FISH MUST BE WITNESSED PRIOR TO  
60 DAYS OF AGE.**

**ADDITIONAL CRITERIA**

- A. Thirty days old means 30 days after hatching of egglayers, 30 days after the fry are released in mouthbrooding species, and in the case of livebearers, 30 days after birth.

- B. Points are awarded only once for each SPECIES. No additional points will be granted for color varieties. In the case of Killies and other fish with recognized subspecies, at the discretion of the majority of the BAP Committee, an additional 5 points may be awarded.

In the event that a completed BAP form is submitted for points and the genus/species name is unknown, no points will be awarded at that time; however, the sheet will be kept on file and points will be awarded when a positive/correct identification can be made and verified.

Points are cumulative, carry over from year to year and once awarded cannot be rescinded.

- C. The fry must have been spawned by the breeder's own fish and he must be able to furnish the breeding pair upon request.
- D. Following the spawning, it is the breeder's responsibility to see that his/her points are recorded.
- E. Any fish not included in the point classification of fishes spawned will be assigned points by the BAP Committee upon request.
- F. In order to have his/her points recorded, the aquarist must submit a signed completed BAP Report Form. For "Class D" and "Class E" spawns, the requirements must be met prior to the awarding of points. The BAP Report Form can be found on the club's website. It is MANDATORY that the completed sheets be submitted to the

BAP chairman BEFORE points are to be awarded for any class.

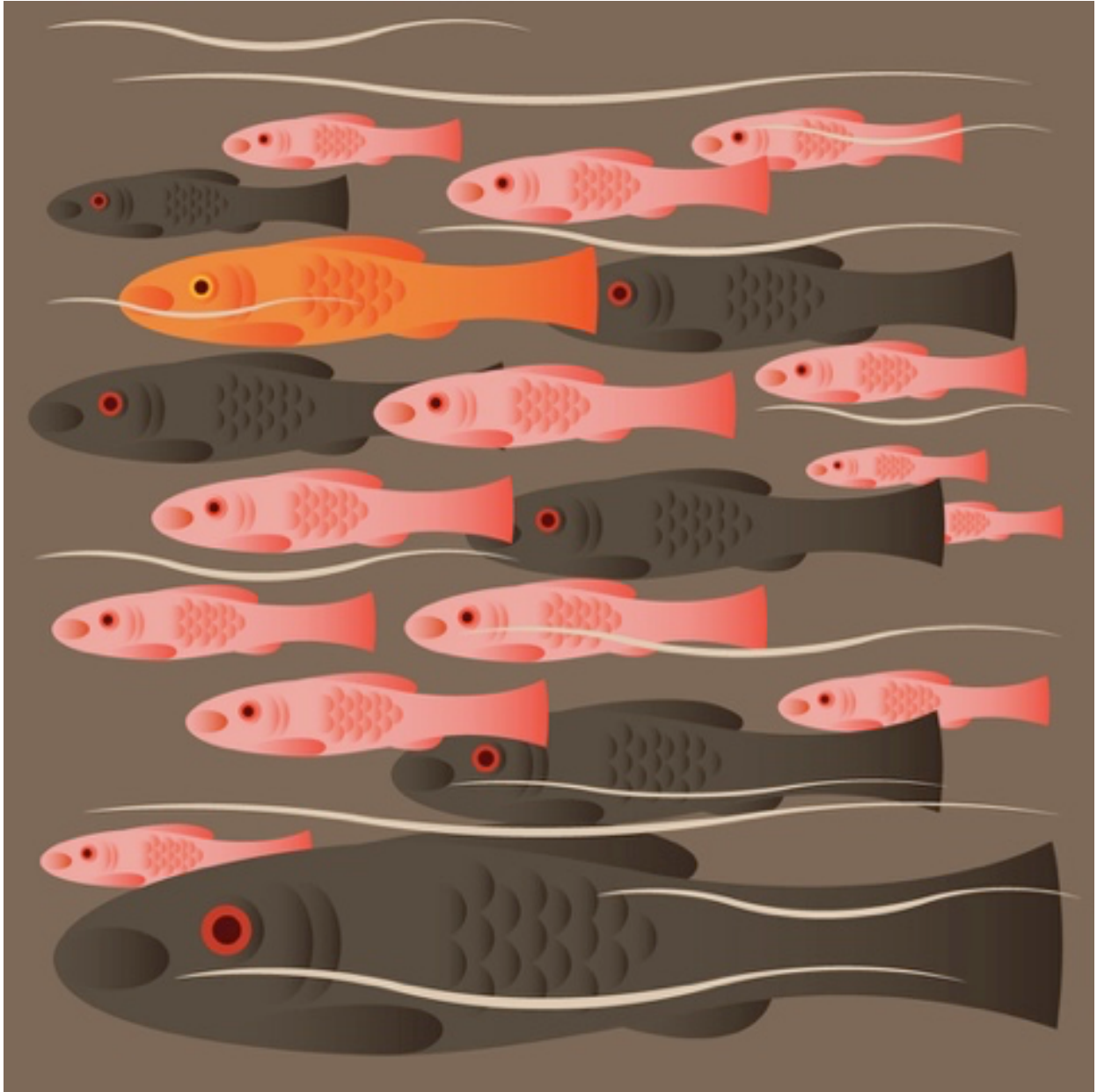
- G. Any questions you may have as to the interpretation of the rules or any suggestions as to their improvements should be submitted to the BAP Chairman in writing.

Spawns are subject to review by the BAP Committee and may be denied if deemed unacceptable. The committee has the right to refuse any spawn that may be questionable. Special rulings may be requested of the committee. Appeals from rulings may be referred to the Board of Directors and may be modified by a two-thirds majority.

- H. All spawns are recorded and kept on file. The completed BAP forms are available upon request and may be referred to by any club member.
- I. If for some reason the 10 required fry are not obtained with the first spawn, additional spawns may be added to the first to make up 10 fry. All spawns require verification. Sheets should not be submitted for points until the total of 10 fry have been witnessed.
- J. Certificates will be awarded stating the breeder's name and fish spawned until the first level, "Breeder's Award", is achieved.
- K. Only members of the BAP Committee may verify a spawn, with the exception of Class A.
- L. If a person is no longer a member, that person's BAP status becomes inactive. If the person becomes a member again,

he/she will be reinstated to the program at the previous level of achievement.

- M. Witnessing may occur digitally by the participant submitting a photo or video of fry and parents along with the completed BAP form to the entire committee.



## GENERAL GUIDE TO FISH CLASSIFICATION

This index should be used as a guide only.  
An "\*" indicates that a genus/family may be listed in two areas. In these cases, check for specific species.

### CLASS A

5 Points

Poecilia ; Xiphophorus; All Snails

### CLASS B

10 points

- \*Characins (except tetras)
- \*Cichlids: *Aequidens*, some *Cichlasoma*, some *Geophagus*, *Haplochromis*, *Hemichromis*, *Nanochromis*, *Pelmatochromis*, *Pelvicachromis*, *Pseudocrenilabrus*, *Tilapia* species except *Sarotherodon*, species not listed elsewhere
- \*Colisa
- \*Cyprinids (e.g., Danios, Barbs, etc.)
- Goodeidae
- Goldfish
- \*Killies - most mop-spawning species
- \*Rainbowfish: *Glossolepis*, *Melanotaenia*, species not listed elsewhere
- \**Trichogaster*

### CLASS C

15 points

- Badis badis*
- Bettas, all wild types
- \*Characins (e.g., tetras)
- \*Cichlids: *Apistogramma*, *Aulonocara*, *Chromides*, *Callochromis*, *Chalinochromis*, some

*Cichlasoma*, some *Geophagus*, *Julidochromis*, *Labidochromis*, *Labeotropheus*, *(Alto/Lepidio/Neo)lamprologus*, *Lethrinops*, *Melanochromis*, *Microgeophagus*, *Pseudotropheus*, *Rhadinocentrus*, *Telmatochromis*, *Tropheus*

- \**Colisa*
- \**Corydoras*
- \*Cyprinids (except: Danios, Barbs, Minnows, etc.)
- \*Halfbeaks (*Dermogenys* sp.)
- Killies, all soilbreeding and some \*mop spawning North American Native Fish unless otherwise listed
- \*Rainbowfish
- \**Trichogaster*
- Trichopsis*

### CLASS D

20 points

(see list for specific species)

- \**Corydoras*
- \*Cichlids: *Crenicara*, *Crenicichla*
- \*Half Beaks (*Nomorhamphus* sp.)
- Rasboras
- Hatchetfishes, Silver Dollars, and Piranhas
- Leaf Fish
- Sharks, Loaches, Botias, Eels
- Congo, Neon, Black Neon, and Cardinal tetras
- Saltwater fish species
- Hoplo, Whiptail, Suckermouth catfish
- Uaru*

### CLASS E

Applies to Grand Master status ONLY  
see attached list

## **CLASS A**

5 points

5	<i>Ampularia cuprina</i> - Mystery Snail
5	Columbian Ramshorn Snail
5	<i>Marisa rotula</i> - Red Ramshorn Snail
5	<i>Physa</i> (pond snail)
5	<i>Poecilia butleri</i>
5	<i>Poecilia caucana</i>
5	<i>Poecilia caudofasciata</i> - Blue Limia
5	<i>Poecilia chica</i>
5	<i>Poecilia formosa</i> - Amazon Molly
5	<i>Poecilia latipinna</i> - Sailfin Molly
5	<i>Poecilia melanogaster</i> - Blue Limia
5	<i>Poecilia mexicana</i> - Sphenops Molly
5	<i>Poecilia nigrofasciata</i> - Hump Back Limia
5	<i>Poecilia perugiae</i>
5	<i>Poecilia picta</i>
5	<i>Poecilia reticulata</i> - Guppy
5	<i>Poecilia</i> sp. Endlers
5	<i>Poecilia sphenops</i>
5	<i>Poecilia velifera</i> - Giant Sailfin Molly
5	<i>Poecilia versicolor</i> - Olive Limia
5	<i>Poecilia vittata</i>
5	<i>Sarotherodon leucosticta</i>
5	<i>Sarotherodon macrochir</i>
5	<i>Sarotherodon melanotheron</i>
5	<i>Sarotherodon mossambicus</i> - Gold Tilapia
5	<i>Tilapia</i> => see <i>Sarotherodon</i>
5	<i>Vivipara</i> species - Live bearer Snail
5	<i>Xiphophorus andersi</i>
5	<i>Xiphophorus cordoni</i>
5	<i>Xiphophorus cortezi</i>
5	<i>Xiphophorus couchianus</i>
5	<i>Xiphophorus evelynae</i> - Puebla Platy
5	<i>Xiphophorus gordoni</i>
5	<i>Xiphophorus helleri</i> - Swordtail (all colors)
5	<i>Xiphophorus maculatus</i> - Platy (all varieties)
5	<i>Xiphophorus milleri</i>
5	<i>Xiphophorus montezuma</i> - Mexican Sword
5	<i>Xiphophorus nezahualcoyotl</i>
5	<i>Xiphophorus nigrensis</i>
5	<i>Xiphophorus pygmaeus</i>
5	<i>Xiphophorus signum</i>
5	<i>Xiphophorus variatus</i> - Variatus Platy
5	<i>Xiphophorus xiphidium</i> - Swordtail Platy

## **CLASS B**

10 points

10	<i>Adinia xenica</i> [native fish]
10	<i>Aequidens awani</i>
10	<i>Aequidens</i> cf. <i>tetramerus</i>
10	<i>Aequidens coeruleopunctatus</i>
10	<i>Aequidens curviceps</i> => see <i>Leatacara</i>
10	<i>Aequidens maroni</i> - Keyhole Cichlid

10	<i>Aequidens portalegrensis</i> => see <i>Cichlasoma</i>
10	<i>Aequidens pulcher</i> - Blue Acara
10	<i>Aequidens rivulatus</i> - Green Terror
10	<i>Aequidens sapayensis</i>
10	<i>Aidaprura carteri</i>
10	<i>Alfaro cultratus</i> - Knife-bellied livebearer
10	<i>Ameca splendens</i> - Butterfly Goodeid
10	<i>Anomalochromis thomasi</i> - Dwarf Jewel Cichlid
10	<i>Aphanius chantrei sosayali</i>
10	<i>Aphanius iberus</i> - Spanish Killie
10	<i>Aphanius mento</i> - Persian Killie
10	<i>Aphanius sophiae</i>
10	<i>Aphyocharax rubripinnis</i> - Bloodfin
10	<i>Aphyosemion ahli</i>
10	<i>Aphyosemion ahli kribbi</i>
10	<i>Aphyosemion bitaeniatum</i>
10	<i>Aphyosemion bitaeniatum ljebu-ode</i>
10	<i>Aphyosemion bivittatum</i>
10	<i>Aphyosemion bivittatum "Benin City"</i>
10	<i>Aphyosemion bivittatum bivittatum</i>
10	<i>Aphyosemion bivittatum bivittatum Funge</i>
10	<i>Aphyosemion bivittatum hollyi biafra</i>
10	<i>Aphyosemion bivittatum leonbergii</i>
10	<i>Aphyosemion bivittatum Lykoko</i>
10	<i>Aphyosemion bivittatum meme</i>
10	<i>Aphyosemion bivittatum volcanum</i>
10	<i>Aphyosemion calliurum</i>
10	<i>Aphyosemion cameronense halleri</i>
10	<i>Aphyosemion celiae</i>
10	<i>Aphyosemion celiae celiae</i>
10	<i>Aphyosemion celiae winifredae</i>
10	<i>Aphyosemion coeleste</i>
10	<i>Aphyosemion coeleste RPC-5</i>
10	<i>Aphyosemion gabunense</i>
10	<i>Aphyosemion gabunense boehmi</i>
10	<i>Aphyosemion gabunense gabunense</i>
10	<i>Aphyosemion gabunense marginatum</i>
10	<i>Aphyosemion gardneri</i> => see <i>Fundulopanchax</i>
10	<i>Aphyosemion maeseni</i>
10	<i>Aphyosemion marmoratum</i>
10	<i>Aphyosemion poliaki</i>
10	<i>Aphyosemion poliaki monea</i>
10	<i>Aphyosemion scheeli</i>
10	<i>Aphyosemion splendopleure Ekondo Titi</i>
10	<i>Aphyosemion splendopleure tiko</i>
10	<i>Aphyosemion striatum</i>
10	<i>Aphyosemion volcanum ekondo titi</i>
10	<i>Aplocheilichthys katange</i>
10	<i>Aplocheilichthys loati</i>
10	<i>Aplocheilichthys normani</i>
10	<i>Aplocheilus dayii</i>
10	<i>Aplocheilus lineatus</i>
10	<i>Aplocheilus panchax</i>
10	<i>Apolcheilichthys myaposa</i>
10	<i>Astyanax fasciatus mexicanus</i> - Blind Cave Fish
10	<i>Ataeniobius toweri</i> - Blue Tailed Goodeid
10	<i>Barbodes hexazona</i> - Six Banded Barb
10	<i>Barbodes lateristriga</i> - T Barb

10	<i>Barbus nigrofasciatus</i>	10	<i>Danio aequipinnatus</i>
10	<i>Bedotia geayi</i> - Madagascar Rainbow	10	<i>Danio malabaricus</i> - Giant Danio
10	<i>Betta splendens</i>	10	<i>Epiplatys ansorgii singua</i>
10	<i>Brachydanio albolineatus</i> - Pearl Danio	10	<i>Epiplatys bifasciatus</i> "Dubreka Guinea Solumba River"
10	<i>Brachydanio frankei</i> - Leopard Danio	10	<i>Epiplatys chaperi</i>
10	<i>Brachydanio kerri</i>	10	<i>Epiplatys chaperi chaperi</i>
10	<i>Brachydanio nigrofasciatus</i>	10	<i>Epiplatys dageti</i>
10	<i>Brachydanio rerio</i> - Zebra Danio	10	<i>Epiplatys dageti monroviae</i>
10	<i>Brachyrhaphis rhabdophora</i>	10	<i>Epiplatys huberi</i>
10	<i>Brachyrhaphis roseni</i>	10	<i>Epiplatys sexfasciatus</i>
10	<i>Capoeta oligolepis</i> - Checkerboard Barb	10	<i>Epiplatys sexfasciatus sexfasciatus</i> Rathkei
10	<i>Capoeta pentazona</i> - Five Banded Barb	10	<i>Epiplatys zimiensis</i>
10	<i>Capoeta semifasciolatus</i>	10	<i>Fundulopanchax gardneri</i>
10	<i>Capoeta tetrazona</i> - Tiger Barb	10	<i>Fundulopanchax gardneri akure</i>
10	<i>Capoeta titteya</i> - Cherry Barb	10	<i>Fundulopanchax gardneri clauseni</i> Akampa
10	<i>Carassius auratus</i> - Goldfish	10	<i>Fundulopanchax gardneri mamfensis</i>
10	<i>Carlhubbsia stuarti</i>	10	<i>Fundulopanchax gardneri nigerianus</i>
10	<i>Chapalichthys pardalis</i> - Polkadot Goodeid	10	<i>Fundulopanchax gardneri nigerianus Jiker</i>
10	<i>Characodon lateralis</i> - Red Rainbow Goodeid	10	<i>Fundulopanchax gardneri nigerianus Jos Plateau</i>
10	<i>Cichlasoma amazonarum</i>	10	<i>Fundulopanchax gardneri nigerianus Lafia</i>
10	<i>Cichlasoma aureum</i>	10	<i>Fundulopanchax gardneri nigerianus Misage</i>
10	<i>Cichlasoma bimaculatus</i>	10	<i>Fundulopanchax gardneri n'sukka</i>
10	<i>Cichlasoma biocellatus</i> => see <i>C. octofasciatus</i>	10	<i>Fundulus confluentus</i> - Marsh Killie [native]
10	<i>Cichlasoma brownae</i>	10	<i>Fundulus heteroclitus</i>
10	<i>Cichlasoma carpintis</i>	10	<i>Gambusia affinis</i> - Mosquito Fish [native fish]
10	<i>Cichlasoma centrarchus</i>	10	<i>Gambusia sexradiata</i>
10	<i>Cichlasoma cf. septemfasciatus</i>	10	<i>Gambusia xanthosoma</i>
10	<i>Cichlasoma cutteri</i>	10	<i>Geophagus brasiliensis</i> - Pearl Cichlid
10	<i>Cichlasoma cyanoguttatus</i> - Texas Cichlid	10	<i>Geophagus steindachneri</i>
[native]		10	<i>Girardinus metallicus</i>
10	<i>Cichlasoma dimerus</i>	10	<i>Glossolepis fasciata</i>
10	<i>Cichlasoma facetus</i>	10	<i>Glossolepis incisus</i> - New Guinea Red Rainbow
10	<i>Cichlasoma festivus</i> => see <i>Mesonautus</i>	10	<i>Glossolepis ramuensis</i>
10	<i>Cichlasoma managuense</i> - Jaguar Cichlid	10	<i>Goodea atripinnis</i>
10	<i>Cichlasoma meeki</i> - Firemouth	10	<i>Gymnocorymbus ternetzi</i> - Black Tetra
10	<i>Cichlasoma melanurus</i>	10	<i>Gymnocorymbus thayeri</i>
10	<i>Cichlasoma nicaraguense</i>	10	<i>Haplochromis ahli</i>
10	<i>Cichlasoma nigrofasciatus</i> - Convict Cichlid	10	<i>Haplochromis annectens</i>
10	<i>Cichlasoma octofasciatus</i> - Jack Dempsey	10	<i>Haplochromis bakonga</i>
10	<i>Cichlasoma panamenses</i>	10	<i>Haplochromis blue &amp; gold</i>
10	<i>Cichlasoma sajica</i>	10	<i>Haplochromis blue/red</i>
10	<i>Cichlasoma salvini</i>	10	<i>Haplochromis borleyi</i>
10	<i>Cichlasoma seiboldii</i>	10	<i>Haplochromis brownae</i>
10	<i>Cichlasoma septemfasciatus</i>	10	<i>Haplochromis burtoni</i>
10	<i>Cichlasoma severus</i>	10	<i>Haplochromis callipterus</i>
10	<i>Cichlasoma spilolus</i> => see <i>C. nicaraguense</i>	10	<i>Haplochromis chrysonotus</i>
10	<i>Cichlasoma spilurus</i> - Blue-eye Cichlid	10	<i>Haplochromis cinereus</i>
10	<i>Cichlasoma synspilus</i> - Redheaded Cichlid	10	<i>Haplochromis compressiceps</i>
10	<i>Cichlasoma trimaculatus</i> - Red-eyed Cichlid	10	<i>Haplochromis decorus</i>
10	<i>Cnesterodon carnegiei</i>	10	<i>Haplochromis electra</i>
10	<i>Colisa fasciata</i> - Giant Gourami	10	<i>Haplochromis endwe</i>
10	<i>Colisa labiosa</i> - Thick-lipped Gourami	10	<i>Haplochromis ericotaenia</i>
10	<i>Colisa lalia</i> - Dwarf Gourami	10	<i>Haplochromis euchilus</i>
10	<i>Copella cololipsis</i>	10	<i>Haplochromis fenestratus</i>
10	<i>Cyprinodon fontinalis ojo del</i>	10	<i>Haplochromis flavimanus</i>
10	<i>Cyprinodon nevadensis armagoae</i>	10	<i>Haplochromis fuscotaeniatius</i>
10	<i>Cyrtocara</i> ==> see <i>Haplochromis</i>	10	<i>Haplochromis horei</i>
10	<i>Cyrtocara kiwinge</i>		

10	<i>Haplochromis incola</i>	10	<i>Hemigrammus nanus</i> - Silver-Tip Tetra
10	<i>Haplochromis kiwinge</i> => see <i>Cyrtocara kiwinge</i>	10	<i>Hemigrammus ocellifer</i> - Head & Tail Light Tetra
10	<i>Haplochromis limax</i>	10	<i>Herotilapia multispinosa</i> - Rainbow Cichlid
10	<i>Haplochromis lividus</i>	10	<i>Heterandria formosa</i> - Mosquito Fish [native fish]
10	<i>Haplochromis longirostris</i>	10	<i>Hyphessobrycon callistus</i>
10	<i>Haplochromis madonna</i>	10	<i>Hyphessobrycon flammeus</i> - Flame Tetra
10	<i>Haplochromis milomo</i>	10	<i>Hyphessobrycon pulchripinnis</i>
10	<i>Haplochromis mloto</i>	10	<i>Hyphessobrycon rosaceus</i>
10	<i>Haplochromis moorii</i>	10	<i>Hyphessobrycon serpaе</i>
10	<i>Haplochromis multicolor</i> => see <i>Pseudotropheus</i>	10	<i>Ilyodon furcidens</i> - Bass Colored Goodeid
10	<i>Haplochromis nubilus</i>	10	<i>Ilyodon lennoni</i> - Pallid Goodeid
10	<i>Haplochromis nyereri</i>	10	<i>Ilyodon whitei</i> - White's Goodeid
10	<i>Haplochromis oblijvedeus</i>	10	<i>Ilyodon xantusi</i> - Gold-Breasted Goodeid
10	<i>Haplochromis ornatus</i>	10	<i>Iodotropheus sprengerae</i> - Rusty Cichlid
10	<i>Haplochromis ovatus</i>	10	<i>Jordanella floridae</i> [native fish]
10	<i>Haplochromis pacidens</i>	10	<i>Laetacara dorsigera</i>
10	<i>Haplochromis pellegrini</i>	10	<i>Laetacara curviceps</i>
10	<i>Haplochromis phenochilus</i>	10	<i>Lucania goodei</i> [native fish]
10	<i>Haplochromis philander</i> => see <i>Pseudotropheus</i>	10	<i>Macropodus concolor</i>
10	<i>Haplochromis placodons</i> => see <i>Trematocranus</i>	10	<i>Macropodus concolor</i> AHL 1937
10	<i>Haplochromis pleurospilus</i>	10	<i>Macropodus opercularis</i> - Paradise Fish
10	<i>Haplochromis polli</i>	10	<i>Melanotaenia affinis pagwi</i>
10	<i>Haplochromis purple head No. 1</i>	10	<i>Melanotaenia arfakensis</i>
10	<i>Haplochromis quadrimaculatus</i>	10	<i>Melanotaenia bataota</i>
10	<i>Haplochromis riponianus</i>	10	<i>Melanotaenia boesemani</i>
10	<i>Haplochromis rostratus</i>	10	<i>Melanotaenia fluviatilis</i>
10	<i>Haplochromis sauvagei</i>	10	<i>Melanotaenia herbertaxelrodi</i>
10	<i>Haplochromis similis</i>	10	<i>Melanotaenia lacustris</i> - Blue Rainbow
10	<i>Haplochromis simpsoni</i>	10	<i>Melanotaenia maccullochi</i>
10	<i>Haplochromis</i> sp. "silun stiletto"	10	<i>Melanotaenia multisquamatus</i>
10	<i>Haplochromis</i> sp. blue & gold	10	<i>Melanotaenia nigrans</i>
10	<i>Haplochromis</i> sp. Blue bar	10	<i>Melanotaenia parkinsoni</i>
10	<i>Haplochromis</i> sp. Blue Fire Fin	10	<i>Melanotaenia praecox</i>
10	<i>Haplochromis</i> sp. emerald	10	<i>Melanotaenia splendida</i>
10	<i>Haplochromis</i> sp. emerald fire	10	<i>Melanotaenia splendida australis</i>
10	<i>Haplochromis</i> sp. flameback	10	<i>Melanotaenia splendida inornata</i>
10	<i>Haplochromis</i> sp. green gold	10	<i>Melanotaenia splendida splendida</i>
10	<i>Haplochromis</i> sp. largemouth	10	<i>Melanotaenia trifasciata</i>
10	<i>Haplochromis</i> sp. migori	10	<i>Mesonata festivus</i> - Flag Cichlid
10	<i>Haplochromis</i> sp. obliquidens	10	<i>Nannacara anomala</i> - Golden Eye Dwarf Cichlid
10	<i>Haplochromis</i> sp. ovatus	10	<i>Nanochromis dimidiatus</i> - Purple Krib
10	<i>Haplochromis</i> sp. piebald redfin	10	<i>Nanochromis nudiceps</i> - Green Krib
10	<i>Haplochromis</i> sp. rock kribensis	10	<i>Nanochromis parilius</i> - Barred nudiceps
10	<i>Haplochromis</i> sp. thick skin	10	<i>Oryzias celebensis</i>
10	<i>Haplochromis stappersii</i>	10	<i>Oryzias latipes</i> - Medaka Rice Fish
10	<i>Haplochromis stevensi</i>	10	<i>Oryzias melastigmus</i>
10	<i>Haplochromis strigatus</i> - Egyptian Mouthbrooder	10	<i>Pachypanchax omalonorus</i>
10	<i>Haplochromis taeniolatus</i>	10	<i>Pachypanchax playfairi</i>
10	<i>Haplochromis venustus</i>	10	<i>Paracyprichromis nigrispinnis</i>
10	<i>Haplochromis wingatii</i> - Nigerian Mouthbrooder	10	<i>Pelmatochromis affinis pulcher</i> - Giant Krib
10	<i>Hemichromis bimaculatus</i> - Jewel Cichlid	10	<i>Pelmatochromis ansorgii</i> - Spotted Krib
10	<i>Hemichromis cristatus</i>	10	<i>Pelmatochromis subocellata</i> - Chameleon Krib
10	<i>Hemichromis elongatus</i>	10	<i>Pelmatochromis thomasi</i> => see <i>Hemichromis</i>
10	<i>Hemichromis lifalili</i>	10	<i>Pelvicachromis cf. pulcher</i>
10	<i>Hemichromis thomasi</i> => see <i>Anomalochromis</i>	10	<i>Pelvicachromis pulcher</i> - Common Krib
10	<i>Hemigrammus caudovittatus</i> - Buenos Aires	10	<i>Pelvicachromis taeniatus</i> - Slender Krib
Tetra		10	<i>Phallichthys amates</i> - Merry Widow
10	<i>Hemigrammus erythrozonus</i> - Glowlight Tetra	10	

10 *Phallichthys amates amates*  
 10 *Phallichthys quadripunctatus*  
 10 *Phalliceros caudimaculatus reticulatus*  
 10 *Poecilia dominicensis*  
 10 *Poeciliopsis gracilis* - 5 Spotted Livebearer  
 10 *Poeciliopsis hnlickai*  
 10 *Popondetta furcata*  
 10 *Pseudocrenilabrus multicolor*  
 10 *Pseudocrenilabrus philander*  
 10 *Pseudocrenilabrus philander dispersus*  
 10 *Pseudophromenus dayi*  
 10 *Pterophyllum scalare* - Angelfish  
 10 *Puntius bimaculatus*  
 10 *Puntius conchoni* - Rosy Barb  
 10 *Puntius filamentosa*  
 10 *Puntius gelis*  
 10 *Puntius nigrofasciatus* - Black Ruby Barb  
 10 *Puntius odessa*  
 10 *Puntius Sachs*  
 10 *Puntius sachs* - Gold Barb  
 10 *Puntius ticto*  
 10 *Quintana atrizona* - Cuban Livebearer  
 10 *Rhinichthys atratulus*  
 10 *Rivulus cryptocallus*  
 10 *Rivulus cylindraceus*  
 10 *Rivulus hartii*  
 10 *Rivulus holmiae*  
 10 *Rivulus holmiae* - Buttercup Rivulus  
 10 *Rivulus magdalenae*  
 10 *Rivulus miles* - Golden-tail Rivulus  
 10 *Rivulus tenuis*  
 10 *Rivulus xiphidius*  
 10 *Scolichthys greenwayi*  
 10 *Tanichthys albonubes* - White Cloud  
 10 *Thayeria obliqua* - Penguin fish  
 10 *Thysochromis ansorgii*  
 10 *Tilapia aurea*  
 10 *Tilapia mariae*  
 10 *Tilapia ruweti*  
 10 *Tilapia sparrmani* - Peacock doral Cichlid  
 10 *Trematocranus placodon*  
 10 *Trichogaster leeri* - Pearl Gourami  
 10 *Trichogaster trichopterus* - Blue, Gold, Cosby,  
 etc.  
 10 *Ugandan cognate* (subspecies of *P. multicolor*)  
 10 *Xenoporphus captivus* - Green Goodeid  
 10 *Xenopallus umbratilis*  
 10 *Xenotaenia resolanae* - Leopard Goodeid  
 10 *Xenotoca eiseni* - Red Tailed Goodeid  
 10 *Zoogoneticus quitzeensis*

## **CLASS C**

15 points

15 *Alticorpus peterdaviesi*  
 15 *Altolamprologus calvus*

15 *Altolamprologus compressiceps*  
 15 *Altolamprologus compressiceps* Orange  
 15 *Aphyosemion* aff. *primigenium*  
 15 *Aphyosemion amaenum*  
 15 *Aphyosemion australe*  
 15 *Aphyosemion bualanum*  
 15 *Aphyosemion bualanum* "Jakiri"  
 15 *Aphyosemion bualanum noop*  
 15 *Aphyosemion chaytori*  
 15 *Aphyosemion chaytori* Ngabu  
 15 *Aphyosemion christyi*  
 15 *Aphyosemion cinnamomeum* => see  
*Fundulopanchax coeleste*  
 15 *Aphyosemion cognatum*  
 15 *Aphyosemion cognatum* Z91/3  
 15 *Aphyosemion cyanostictum*  
 15 *Aphyosemion dargei*  
 15 *Aphyosemion dargei* M'bam  
 15 *Aphyosemion elegans*  
 15 *Aphyosemion elegans* Madimba  
 15 *Aphyosemion escherichi*  
 15 *Aphyosemion etzeli* Yek Bir  
 15 *Aphyosemion exigoideum* Ngoudoufola  
 15 *Aphyosemion filamentosus* => see  
*Fundulopanchax*  
 15 *Aphyosemion georgiae*  
 15 *Aphyosemion geryi*  
 15 *Aphyosemion guignardi*  
 15 *Aphyosemion guignardi* nigriflumi Mamou  
 15 *Aphyosemion guignardi* sougetta  
 15 *Aphyosemion guineense*  
 15 *Aphyosemion gularis* => see *Fundulopanchax*  
 15 *Aphyosemion herzogi*  
 15 *Aphyosemion jeanpoli*  
 15 *Aphyosemion labarrei*  
 15 *Aphyosemion liberiense*  
 15 *Aphyosemion liberiensis*  
 15 *Aphyosemion louessense* Malinga  
 15 *Aphyosemion lujae*  
 15 *Aphyosemion melanopteron*  
 15 *Aphyosemion mirabilis* => see *Fundulopanchax*  
 15 *Aphyosemion occidentalis* => see *Fundulo*  
*panchax*  
 15 *Aphyosemion ogoense*  
 15 *Aphyosemion ogoense* lutete  
 15 *Aphyosemion ogoense* ottogartneri  
 15 *Aphyosemion pascheni*  
 15 *Aphyosemion primigenium*  
 15 *Aphyosemion primigenium* G-80  
 15 *Aphyosemion puerzli*  
 15 *Aphyosemion robertsoni* => see *Fundulopanchax*  
 15 *Aphyosemion roloff*  
 15 *Aphyosemion roloff* hastingsi  
 15 *Aphyosemion schioetzi*  
 15 *Aphyosemion* sp. etz  
 15 *Aphyosemion* sp. Lake Fuja  
 15 *Aphyosemion toddi* => see *Fundulopanchax*  
 15 *Aphyosemion walkeri* => see *Fundulopanchax*



15	<i>Apistogramma agassizi</i>	15	<i>Betta taeniata</i>
15	<i>Apistogramma bitaeniata</i>	15	<i>Betta trifasciata</i> => see <i>Betta picta</i>
15	<i>Apistogramma borellii</i>	15	<i>Betta unimaculata</i>
15	<i>Apistogramma cacatuoides</i>	15	<i>Callochromis macrops</i>
15	<i>Apistogramma caetei</i>	15	<i>Callochromis melanostma</i>
15	<i>Apistogramma combrae</i>	15	<i>Chalinochromis brichardi</i>
15	<i>Apistogramma inconspicua</i>	15	<i>Chalinochromis lanisticola</i>
15	<i>Apistogramma kleei</i> => see <i>Apistogramma</i>	15	<i>Chalinochromis malagarazi</i>
	<i>bitaeniata</i>	15	<i>Chalinochromis sp. bifrenatus</i>
15	<i>Apistogramma macmasteri</i>	15	<i>Chalinochromis sp. natus</i>
15	<i>Apistogramma ornatipinnis</i> => see <i>Apisto.</i>	15	<i>Chalinochromis sp. ndobnoi</i>
	<i>steindachneri</i>	15	<i>Chalinochromis sp. Popelini</i>
15	<i>Apistogramma ortmanni</i>	15	<i>Chalinochromis sp. vala</i>
15	<i>Apistogramma pertense</i>	15	<i>Chilatherina bleheri</i>
15	<i>Apistogramma ramirezi</i> => see <i>Microgeophagus</i>	15	<i>Chlamydogobius eremius</i>
15	<i>Apistogramma reitzigi</i> => see <i>Apisto. borellii</i>	15	<i>Chromidotilapia guentheri</i>
15	<i>Apistogramma sp. rotpunkt</i>	15	<i>Cichlasoma coryphaenoides</i>
15	<i>Apistogramma steindachneri</i>	15	<i>Cichlasoma hellebrunni</i> => see <i>C. corphaenoides</i>
15	<i>Apistogramma wickleri</i> => see <i>Apisto.</i>	15	<i>Cichlasoma labiatus</i> - Red Devil
	<i>steindachneri</i>	15	<i>Cichlasoma maculicaudus</i>
15	<i>Apistogrammoides pucallpaensis</i>	15	<i>Cichlasoma portalegrensis</i> - Port Acara
15	<i>Aspidoras lakoi</i>	15	<i>Cichlasoma spinosissimus</i> - Blue-eye Cichlid
15	<i>Aspidoras menezesi</i>	15	<i>Colisa chuna</i> - Honey Dwarf Gourami
15	<i>Astatoreochromis alluandi</i>	15	<i>Copella arnoldi</i> - Splash Tetra
15	<i>Aulonocara aristochromis</i>	15	<i>Copidichromis borilyi</i>
15	<i>Aulonocara auditor</i>	15	<i>Copidichromis sp. virginalis chitande</i>
15	<i>Aulonocara baenschi</i>	15	<i>Corydoras adolphi</i>
15	<i>Aulonocara caroyli</i>	15	<i>Corydoras aeneus</i>
15	<i>Aulonocara ethelwynnae</i>	15	<i>Corydoras arcuatus</i>
15	<i>Aulonocara hansbaenschi</i>	15	<i>Corydoras axelrodi</i>
15	<i>Aulonocara kandcensis</i>	15	<i>Corydoras barbatus</i>
15	<i>Aulonocara korneliae</i>	15	<i>Corydoras bondi</i>
15	<i>Aulonocara maylandi</i>	15	<i>Corydoras burgessi</i>
15	<i>Aulonocara saulosi</i>	15	<i>Corydoras caudimaculatus</i>
15	<i>Aulonocara sp. caroli</i>	15	<i>Corydoras concolor</i>
15	<i>Aulonocara sp. Flavescent</i>	15	<i>Corydoras davidsandsi</i>
15	<i>Aulonocara sp. Ft. McGuire</i>	15	<i>Corydoras delphax</i>
15	<i>Aulonocara sp. jacobfreibergi</i>	15	<i>Corydoras erhardti</i>
15	<i>Aulonocara sp. Kande Island</i>	15	<i>Corydoras julii</i>
15	<i>Aulonocara sp. maleri</i>	15	<i>Corydoras melanistius</i>
15	<i>Aulonocara sp. mbinji</i>	15	<i>Corydoras melini</i>
15	<i>Aulonocara sp. naulana 500</i>	15	<i>Corydoras metae</i>
15	<i>Aulonocara sp. Nyassae</i>	15	<i>Corydoras myersi</i>
15	<i>Aulonocara sp. red peacock</i>	15	<i>Corydoras nanus</i>
15	<i>Aulonocara sp. Walteri</i>	15	<i>Corydoras nattereri</i>
15	<i>Aulonocara stuartgranti</i>	15	<i>Corydoras paleatus</i>
15	<i>Aulonocranus dewindti</i>	15	<i>Corydoras panda</i>
15	<i>Badis badis</i>	15	<i>Corydoras polystictus</i>
15	<i>Belontia signata</i> - Combtail	15	<i>Corydoras reticulatus</i>
15	<i>Betta bellica</i>	15	<i>Corydoras trilineatus</i>
15	<i>Betta brederi</i>	15	<i>Corydoras undulatus</i>
15	<i>Betta coccina</i>	15	<i>Corydoras zygatus</i>
15	<i>Betta edithae</i>	15	<i>Corydorus melanotaenia</i>
15	<i>Betta fasciata</i>	15	<i>Ctenochromis horei</i>
15	<i>Betta imbellis</i>	15	<i>Ctenopoma congicum</i>
15	<i>Betta picta</i>	15	<i>Ctenops</i> => see <i>Trichopsis</i>
15	<i>Betta pugnax</i>	15	<i>Cyathochromis obliquidens</i>
15	<i>Betta smaragdina</i>	15	<i>Cyathopharynx furcifer</i>

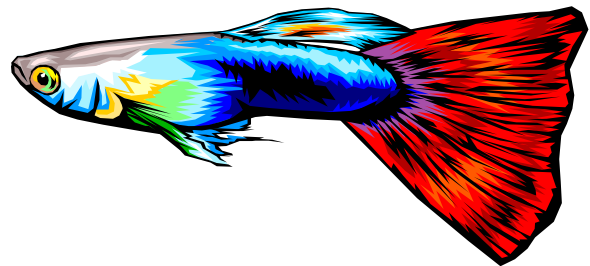
15	<i>Cynolebias alexandri</i>	15	<i>Geophagus raboutus</i>
15	<i>Cynolebias antenori</i>	15	<i>Gephyrochromis moorii</i>
15	<i>Cynolebias bellottii</i>	15	<i>Gymnogeophagus balzani</i>
15	<i>Cynolebias bokemani</i>	15	<i>Gymnogeophagus gymnogenys</i>
15	<i>Cynolebias constanciae</i>	15	<i>Gymnogeophagus rhabdotus</i>
15	<i>Cynolebias ladigesii</i>	15	<i>Helostoma temminckii</i> - Kissing Gourami
15	<i>Cynolebias luteoflamulatus</i>	15	<i>Hemigrammus rhodostomus</i> - Rummy-nose
15	<i>Cynolebias magnificus</i>	Tetra	
15	<i>Cynolebias minimus</i>	15	<i>Hemitalapia oxyrhynchus</i>
15	<i>Cynolebias myersi</i>	15	<i>Hyphessobrycon rubrostigma</i> - Bleeding Heart
15	<i>Cynolebias nigripinnis</i>	15	<i>Iriatherina weneri</i>
15	<i>Cynolebias whitei</i>	15	<i>Julidochromis dickfeldi</i>
15	<i>Cynolebias wolterstorfii</i>	15	<i>Julidochromis kapamba</i>
15	<i>Cynotilapia afra</i>	15	<i>Julidochromis marlieri</i>
15	<i>Cynotilapia sp. yellow bee</i>	15	<i>Julidochromis marlieri</i> sp. Kalambo
15	<i>Cyphotilapia frontosa</i>	15	<i>Julidochromis ornatus</i>
15	<i>Cyprichromis leptosoma</i>	15	<i>Julidochromis regani</i>
15	<i>Cyprichromis</i> sp. Jumbo leptosoma	15	<i>Julidochromis</i> sp. dwarf transcriptus
15	<i>Dermogenys pusillus</i> - Half-beak	15	<i>Julidochromis transcriptus</i>
15	<i>Elassoma evergladei</i>	15	<i>Labeotropheus fueleborni</i>
15	<i>Epiplatys annulatus</i>	15	<i>Labeotropheus trewavasae</i>
15	<i>Epiplatys annulatus</i> "Monrovia"	15	<i>Labidochromis caeruleus</i>
15	<i>Etroplus maculatus</i>	15	<i>Labidochromis chisumulae</i>
15	<i>Fundulopanchax amietae</i>	15	<i>Labidochromis exasperatus</i>
15	<i>Fundulopanchax amsingki</i>	15	<i>Labidochromis fryeri</i>
15	<i>Fundulopanchax arnoldi</i>	15	<i>Labidochromis gigas</i>
15	<i>Fundulopanchax batesii</i>	15	<i>Labidochromis masinje</i>
15	<i>Fundulopanchax biafranum</i>	15	<i>Labidochromis mylodon</i>
15	<i>Fundulopanchax cinnamomeum</i>	15	<i>Labidochromis</i> sp. Lemon
15	<i>Fundulopanchax deltaensis</i>	15	<i>Labidochromis</i> sp. white
15	<i>Fundulopanchax fallax</i>	15	<i>Labidochromis textilis</i>
15	<i>Fundulopanchax filamentosus</i>	15	<i>Labidochromis zebroides</i>
15	<i>Fundulopanchax filamentosus</i> lagos	15	<i>Lamprologus callipterus</i>
15	<i>Fundulopanchax gularis</i>	15	<i>Lamprologus candopunctatus</i>
15	<i>Fundulopanchax huwaldi</i>	15	<i>Lamprologus elongatus</i>
15	<i>Fundulopanchax kribanus</i>	15	<i>Lamprologus furcifer</i>
15	<i>Fundulopanchax mirabilis</i>	15	<i>Lamprologus gracilis</i>
15	<i>Fundulopanchax mirabilis mirabilis</i> Tankeri	15	<i>Lamprologus kungweensis</i>
15	<i>Fundulopanchax mirabilis moensis</i>	15	<i>Lamprologus lemairei</i>
15	<i>Fundulopanchax mirabilis traudeae</i>	15	<i>Lamprologus melegrise</i>
15	<i>Fundulopanchax monroviae</i>	15	<i>Lamprologus mocquardi</i>
15	<i>Fundulopanchax ndianus</i>	15	<i>Lamprologus mondabu</i>
15	<i>Fundulopanchax nigerianum</i>	15	<i>Lamprologus obscurus</i>
15	<i>Fundulopanchax occidentalis</i>	15	<i>Lamprologus sexfasciatus</i>
15	<i>Fundulopanchax puerzli</i>	15	<i>Lamprologus signatus</i>
15	<i>Fundulopanchax robertsoni</i>	15	<i>Lamprologus</i> sp. affinis multifasciatus
15	<i>Fundulopanchax rubrolabiale</i>	15	<i>Lamprologus</i> sp. daffodil
15	<i>Fundulopanchax schwoiseri</i>	15	<i>Lamprologus</i> sp. eseki
15	<i>Fundulopanchax seymouri</i>	15	<i>Lamprologus</i> sp. magarae
15	<i>Fundulopanchax sjoestedti</i>	15	<i>Lamprologus</i> sp. olivaceus
15	<i>Fundulopanchax splendidus</i>	15	<i>Lamprologus</i> sp. walteri
15	<i>Fundulopanchax spoorenbergi</i>	15	<i>Lamprologus vaithae</i>
15	<i>Fundulopanchax toddi</i>	15	<i>Lamprologus waunthioni</i>
15	<i>Fundulopanchax walkeri</i>	15	<i>Lamprologus weneri</i>
15	<i>Fundulopanchax walkeri</i> GH-2	15	<i>Lepidiodamprologus attenuatus</i>
15	<i>Geophagus hondae</i> => see <i>Geophagus</i>	15	<i>Lepidiodamprologus cunningtoni</i>
15	<i>steindachneri</i> (10 pts)	15	<i>Lepidiodamprologus kendalli</i>
15	<i>Geophagus jurupari</i>	15	<i>Lepidiodamprologus nkambe</i>

15	<i>Lethrinops lethrinus</i>	15	<i>Nothobranchius jubbi</i> Warfa Blue
15	<i>Lethrinops microstoma</i>	15	<i>Nothobranchius kirki</i>
15	<i>Limnochromis auritus</i>	15	<i>Nothobranchius korthausae</i>
15	<i>Melanochromis auratus</i>	15	<i>Nothobranchius KTZ 83/5</i>
15	<i>Melanochromis chipokae</i>	15	<i>Nothobranchius lafiemsos</i>
15	<i>Melanochromis joanjohnsonae</i>	15	<i>Nothobranchius lourensi</i>
15	<i>Melanochromis johanni</i>	15	<i>Nothobranchius melanospilus</i>
15	<i>Melanochromis parallelus</i>	15	<i>Nothobranchius palmquisti</i>
15	<i>Melanochromis</i> sp. electric blue	15	<i>Nothobranchius palmquisti</i> Mrima
15	<i>Melanochromis</i> sp. lepidophage	15	<i>Nothobranchius patrizii</i>
15	<i>Melanochromis</i> sp. maingano	15	<i>Nothobranchius rachovii</i>
15	<i>Melanochromis vermivorous</i>	15	<i>Nothobranchius rubripinnis</i>
15	<i>Microgeophagus altispinosa</i>	15	<i>Nothobranchius rubripinnis</i> T 283/5
15	<i>Microgeophagus ramirezi</i> - Ram	15	<i>Nothobranchius</i> sp. abrahamu NW 88/2
15	<i>Microgeophagus</i> sp.	15	<i>Nothobranchius</i> sp. Kisasi
15	<i>Moenkhausia oligolepis</i>	15	<i>Nothobranchius</i> sp. salima
15	<i>Moenkhausia pittieri</i>	15	<i>Nothobranchius taeniopygus</i>
15	<i>Moenkhausia santae filomenae</i>	15	<i>Nothobranchius</i> U-5
15	<i>Nannostomus beckfordi</i>	15	<i>Otocinclus arnoldi</i>
15	<i>Nannostomus marginatus</i>	15	<i>Otopharynx nitidus</i>
15	<i>Neetropus nematopus</i>	15	<i>Petrotilapia</i> sp. Eastern Gold
15	<i>Nematobrycon palmeri</i> - Emperor Tetra	15	<i>Petrotilapia</i> sp. small blue
15	<i>Neofundulus paraguayensis</i>	15	<i>Petrotilapia tridentiger</i>
15	<i>Neolamprologus boulengeri</i>	15	<i>Pseudomugil cyanodorsalis</i>
15	<i>Neolamprologus brevis</i>	15	<i>Pseudomugil signifer</i>
15	<i>Neolamprologus brichardi</i>	15	<i>Pseudothosphis barlowi</i>
15	<i>Neolamprologus buescheri</i>	15	<i>Pseudotropheus accii</i>
15	<i>Neolamprologus christyi</i>	15	<i>Pseudotropheus acei</i>
15	<i>Neolamprologus cunningtoni</i>	15	<i>Pseudotropheus auratus</i>
15	<i>Neolamprologus cygnus</i>	15	<i>Pseudotropheus aurora</i>
15	<i>Neolamprologus cylindricus</i>	15	<i>Pseudotropheus edwardi</i>
15	<i>Neolamprologus fasciatus</i>	15	<i>Pseudotropheus elongatus</i>
15	<i>Neolamprologus hecqui</i>	15	<i>Pseudotropheus greberi</i>
15	<i>Neolamprologus leleupi</i>	15	<i>Pseudotropheus kingsizei</i>
15	<i>Neolamprologus leloupi</i>	15	<i>Pseudotropheus lanisticola</i>
15	<i>Neolamprologus longior</i>	15	<i>Pseudotropheus livingstoni</i>
15	<i>Neolamprologus meeli</i>	15	<i>Pseudotropheus lombardoi</i>
15	<i>Neolamprologus melegrise</i>	15	<i>Pseudotropheus lombardoi</i> malombe
15	<i>Neolamprologus mondabu</i>	15	<i>Pseudotropheus macrophthalmus</i>
15	<i>Neolamprologus moorii</i>	15	<i>Pseudotropheus macrophthalmus</i> chilumba
15	<i>Neolamprologus multifasciatus</i>	15	<i>Pseudotropheus malombe</i>
15	<i>Neolamprologus mustax</i>	15	<i>Pseudotropheus microstoma</i>
15	<i>Neolamprologus niger</i>	15	<i>Pseudotropheus minutus</i>
15	<i>Neolamprologus ocellatus</i>	15	<i>Pseudotropheus patricki</i>
15	<i>Neolamprologus ornatipinnis</i>	15	<i>Pseudotropheus saulosi</i>
15	<i>Neolamprologus petricola</i>	15	<i>Pseudotropheus socolofi</i>
15	<i>Neolamprologus pleuromaculatus</i>	15	<i>Pseudotropheus</i> sp. aggressive blue
15	<i>Neolamprologus pulcher</i>	15	<i>Pseudotropheus</i> sp. chailosi
15	<i>Neolamprologus savoryi</i>	15	<i>Pseudotropheus</i> sp. chameleo
15	<i>Neolamprologus</i> sp. sunspot	15	<i>Pseudotropheus tropheops</i>
15	<i>Neolamprologus staeki</i>	15	<i>Pseudotropheus williamsi</i>
15	<i>Neolamprologus tetracanthus</i>	15	<i>Pseudotropheus zebra</i>
15	<i>Neolamprologus tretocephalus</i>	15	<i>Pterolebias longipinnis</i>
15	<i>Nothobranchius eggersi</i>	15	<i>Pterolebias peruensis</i> - Longfin
15	<i>Nothobranchius elongatus</i>	15	<i>Pterolebias zonatus</i> - Lace Fin
15	<i>Nothobranchius foerschi</i>	15	<i>Pterolebias longipinnis</i>
15	<i>Nothobranchius guentheri</i>	15	<i>Pterolebias zonatus</i>
15	<i>Nothobranchius jubbi</i>	15	<i>Rachovia pyropunctatus</i>

15	<i>Rhadinocentrus</i> sp.	20	<i>Pantodon buchholzi</i>
15	<i>Roloffia</i> => see <i>Aphyosemion</i>	20	<i>Paracheirodon innesi</i> - Neon Tetra
15	<i>Steatocranus casuarius</i> - Humphead	20	<i>Phenacogrammus interruptus</i> - Congo Tetra
15	<i>Telmatherina ladigesii</i>	20	<i>Polycentrus schomburgki</i> - Leaf Fish
15	<i>Telmatochromis bifrenatus</i>	20	<i>Rasbora heteromorpha</i>
15	<i>Telmatochromis burgeoni</i>	20	<i>Rasbora trilineata</i>
15	<i>Telmatochromis caninus</i>	20	<i>Rineloricaria filamentosa</i> - Whiptail Catfish
15	<i>Telmatochromis dhonti</i>	20	<i>Rineloricaria formosa</i>
15	<i>Telmatochromis</i> sp.	20	<i>Rineloricaria morrowi</i>
15	<i>Telmatochromis</i> sp. Zaire	20	<i>Rineloricaria parva</i>
15	<i>Telmatochromis temporalis</i>	20	Saltwater Fish (Any)
15	<i>Telmatochromis vittatus</i>	20	<i>Scatophagus argus</i>
15	<i>Trematocranus</i> ==> see <i>Aulonocara</i>	20	<i>Sphaerichthys ophromenoides</i> - Chocolate Gourami
15	<i>Trichogaster microlepis</i> - Moonlight	20	<i>Symphysodon</i> sp. - Any Discus
15	<i>Trichogaster pectoralis</i> - Snakeskin	20	<i>Uaru amphiacanthoides</i>
15	<i>Trichopsis pumilus</i> - Pygmy		
15	<i>Trichopsis schalleri</i> - Three Lined Croaking		
15	<i>Trichopsis vittatus</i> - Croaking		
15	<i>Tropheus duboisi</i>		
15	<i>Tropheus moorii dahabu</i>		
15	<i>Tropheus</i> sp.		
15	<i>Xenotilapia ochrogenys</i>		
15	<i>Xenotilapia ornatipinnis</i>		
15	<i>Xenotilapia sima</i>		

**CLASS D**  
20 points

20	<i>Abramites microcephalus</i> - Marbled Headstander
20	<i>Acanthopthalmus kuhlii</i> - Kuhli Loach
20	<i>Acanthopthalmus semicinctus</i>
20	<i>Ambystoma mexicanum</i> - Axolotl Salamander
20	<i>Anableps anableps</i> - Four Eyes
20	<i>Ancistrus dolichopterus</i>
20	<i>Ancistrus triradiatus</i>
20	<i>Astronotus ocellatus</i> - Oscar
20	<i>Belonesox belizanus</i> - Pike Livebearer
20	<i>Botia macracantha</i> - Clown Loach
20	<i>Bunocephalus coracoideus</i> - Banjo Catfish
20	<i>Carnegiella strigata</i> - Marble Hatchet
20	<i>Cheirodon axelrodi</i> - Cardinal Tetra
20	<i>Corydoras habrosus</i>
20	<i>Corydoras hastatus</i>
20	<i>Corydoras pygmaeus</i>
20	<i>Crenicara</i> sp.
20	<i>Crenichicla</i> sp.
20	<i>Culeau inconstans</i>
20	<i>Farlowella acus</i>
20	<i>Hoplosternum thoracatum</i>
20	<i>Hyphessobrycon herbertaxelrodi</i> - Black neon
20	<i>Hyphessobrycon innesi</i> => see <i>Paracheirodon</i>
20	<i>Labeo bicolor</i> - Red-tailed Black shark
20	<i>Lepomis gibbosus</i>
20	<i>Monodactylus argenteus</i> - Mono
20	<i>Nomorhamphus celebensis</i>
20	<i>Nomorhamphus liemi</i>
20	<i>Pantanodon podoxys</i>



## CLASS E

Applies to Grand Master Status Only

1) Saltwater or Brackish	1 distinct fish species
2) Shark, Loach, Botia, Eel	1 distinct species
3) Invertebrates	4 distinct species other than snails
4) Tetras	1 from <i>Hyphessobrycon</i> species
5) Silver Dollar or Piranha	1 distinct species
6) Gouramis <i>osphromenoides</i>	<i>Helostoma temmincki</i> or <i>Sphaerichthys</i>
7) Rasboras	1 distinct species
8) Leaf Fish	1 distinct species
9) Anableps anableps	
10) Stickleback	1 distinct species
11) Headstander	1 distinct species
12) Glass Catfish	1 distinct species
13) Hatchet Fish	1 distinct species

## SPECIALTY CLASS

If a fish falls into more than one category, the participant must select the category in which he wishes to record the spawn. This decision is final and may not be reclassified at a later date.

1) Livebearers <i>Poecilia</i> or <i>Xiphophorus</i> )	6 (2 species must be other than
2) Anabantids (Other than Bettas)	4 distinct species
3) Bettas	2 distinct species
4) Barbs	3 distinct species
5) Rasboras	1 distinct species
6) Tetras	3 distinct species
7) Cichlids-Mouthbrooding	2 distinct species
8) Cichlids-Substrate Spawners	5 distinct species
9) Killies-Mop Spawners	2 distinct species
10) Killies-Peat Spawners	2 distinct species
11) Catfish (Other than <i>Corydoras</i> , etc.)	1 distinct species
12) <i>Corydoras</i> , <i>Brochis</i> , <i>Aspidoras</i> etc.	2 distinct species
13) Cyprinids (Other than those listed elsewhere)	4 distinct species
14) Goldfish & Koi	1 distinct species
15) Native American Fish	2 distinct species
16) Other	1 distinct species

## **INVERTEBRATES**

(Investigational Class)

The following species have been reproduced by our club members:

### Marine Species

*Aiptasia pallida* – Pale sea anemone  
*Clavelina huntsman* – Sea Squirt  
*Eurythoe complanate* – Bristle worm  
*Hallocynthia papillosa* – Sea Squirt  
*Neomysis americana* – Saltwater shrimp  
*Obelia geniculata* – Wine Glass Hydroid  
*Sabellastarte magnifica* – Feather Worm  
*Thelepus crispus* – Terebellid Worm

### Freshwater Species

*Palaemonetes elegans* – Ghost Shrimp

Note: At the November 1987 executive Board meeting, the BAP Committee and BOD members discussed and approved the separation of invertebrate species from our current BAP program. The primary reason for this was due the two different modes of reproduction (sexual vs asexual). It was additionally agreed upon that a new separate category, similar to the Specialty Award Class, would be established. In this way those who choose to devote the time to invertebrate reproduction could do so and achieve recognition for their efforts. This new class is presently under investigation.

For the few people who have already received credit for invertebrate reproductions, their points will remain. When the new invertebrate class is established, the club members who have received points will have the opportunity to leave their points where they currently are or have them transferred to the new class.

If you have any invertebrates that reproduce, fill out a BAP form as you would for a fish species, have the invert witnessed, and give your signed form to the BAP Chairperson. These sheets will be kept on file until such time that the new class is established.

# AQUATIC HORTICULTURE AWARD PROGRAM (AHAP)

(Revised 7/2008)

## PURPOSES

- A. To recognize outstanding achievement in growing and propagating aquatic plants.
- B. To gather information and knowledge of aquatic plants and their requirements with the additional bonus of having more beautiful aquariums and inhabitants.
- C. To identify new aquatic plant species and conditions required for their care in the aquarium.
- D. To establish a record of aquatic plant species and conditions required for their maintenance, which will be available to all members.

## ELIGIBILITY

All members are eligible for the Aquatic Horticulture Award Program. If a member does not renew his/her membership, their points will be kept on the "inactive" list until such time that they renew their membership.

## COMMITTEE

- A. The AHAP Committee will consist of a Chairman and at least 2 additional appointed members.
- B. The duties of the committee shall consist of witnessing the propagation of aquatic plants as outlined, maintaining an accurate record of the points

standing, reporting these to the membership and obtaining/presenting awards.

## AWARDS

### BEGINNING AQUATIC

#### HORTICULTURALIST: 50 Points

Aquarist must accumulate a total of 50 points.

#### AQUATIC HORTICULTURALIST: 100

#### Points

Aquarist must accumulate a total of 100 points. In addition to completing the Beginning requirements, an additional 50 points must be earned.

### SENIOR AQUATIC

#### HORTICULTURALIST: 150 Points

Aquarist must accumulate a total of 150 points. Aquatic Horticulturist plus 2 species from Group C, and 2 from Group D, and propagate 20 species total.

### EXPERT AQUATIC

#### HORTICULTURALIST: 200 Points

Aquarist must accumulate a total of 200 points. Senior Aquatic Horticulturist plus 1 species from Group E and propagate 28 species total.

### MASTER AQUATIC

#### HORTICULTURALIST: 300 Points

Aquarist must accumulate a total of 300 points. Expert Aquatic Horticulturist plus an additional species from Group E and a total of 35 species propagated.

**GRAND MASTER HORTICULTURALIST:**  
450 Points

Aquarist must accumulate a total of 450 points. Master Aquatic Horticulturist plus an additional species from Group E, 1 species from Group F, and a total of 55 species propagated.

**SPECIES AWARD:**

Given to participating AHAP members who complete 11 of the 14 species classes.

**GREEN THUMB AWARD:**

Presented to the member who earns the most points in one award year. The award year runs from May 1 through April 30.

**REPRODUCTION REQUIREMENTS**

1. For all species, verification and registration of propagation in Groups A through E may be verified by a member of the AHAP Committee in the active member's residence.
2. Floating plants. Doubling of the original amount/area.
3. Bunch plants. Doubling of the original plant in height.
4. Reproduction by runner or division. Reproduction is achieved when a newly formed plant is grown in aquarist's tank from a runner or rhizome that was grown in the aquarist's tank. The newly formed plant must live independently from the parent plant for 30 days while the parent plant is still alive and in good health.

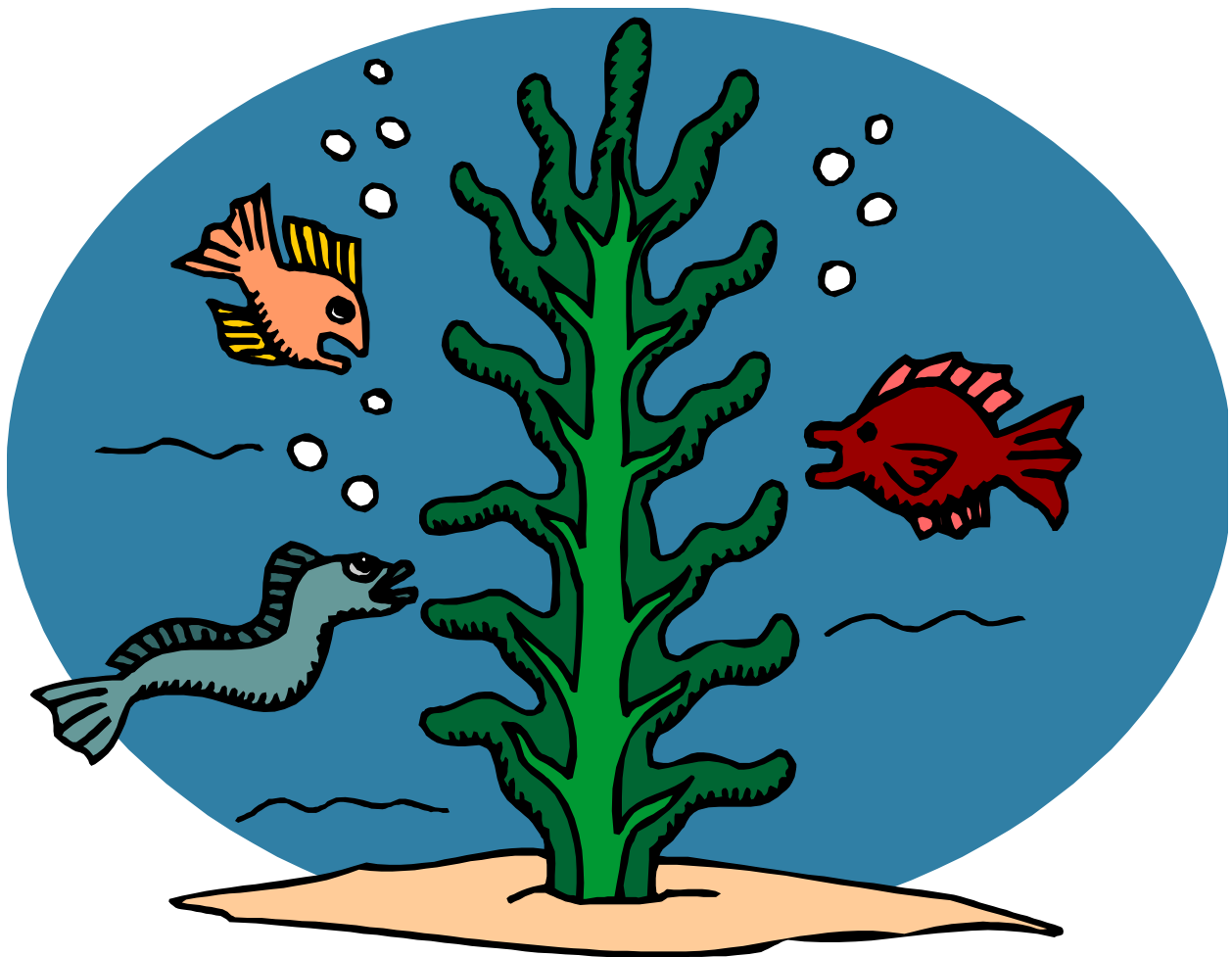
5. Rhizome plants (Anubias). Plants must double in length.
6. Flowering. Must be witnessed when in full bloom, attached to the plant, in the member's aquarium/pond.
7. Reproduction sexually (from seed). One plant reproduced by sexual means from an aquarist's own parent plant. Seeds and reproduced plants must be from the member's own parent plant, not from a supplier or breeder. The Chairman of the AHAP Committee witnesses new plant 30 days after developing into a miniature plant. The reproduction must be verified at least twice; once when flowering and once when the young plants are old enough to be recognized as being the young of the parent plant.

**ADDITIONAL CRITERIA**

1. Plants reproduced must conform with the following definition of an aquatic plant: "An aquatic plant is one which, in the wild or native state, can be grown in the submerged state as a normal occurrence at some time during the course of any one complete season."
2. Plants must be identified by the aquarist and verification made by the AHAP Committee. A good book for identification is *Aquarium Plants: The Practical Guide* by Pablo Tepoot or *Aquarium Plants* by Dr. Rataj & Thomas Horeman.
3. In order to have his/her points recorded, the aquarist must submit a completed, witnessed Report Form. A club member may review the forms on file from the Chairman who will make them available at all club meetings.
4. For Groups E and F the aquarist must write an article for publication in the club bulletin or orally at a meeting.



5. The propagation must take place in the aquarist's own tank.
6. Any plant not included in the point grouping will be assigned points by the AHAP Committee upon request.
7. Any questions you may have as to the interpretation of the rules or any suggestions as to their improvements should be submitted to the AHAP Chairman.
8. All propagations are recorded and kept on file.
9. It is MANDATORY that completed sheets be submitted to the AHAP chairman BEFORE points are to be awarded for any group.



The following is a list of species by point group.  
This is not complete and is intended to be used only as a guide.

**GROUP A**

5 Points or counts as one species

*Azolla* species (floating fern)  
*Ceratopteris* species  
*Ceratophyllum* species  
*Elodea* species  
*Hygrophilia* species (except *H. difformis*)  
*Lemna* species  
*Riccia* species  
*Sagittaria* species  
*Salvinia* species  
*Vallisneria* species

**GROUP B**

10 Points or counts as one species

*Bacopa* species  
*Cabomba* species  
*Cardamine* species  
*Echinodorus tenellus* only  
*Eleocharis* species  
*Fontinalis* species  
*Hydrocotyle* species (pennywort)  
*Hygrophila difformis* (water wisteria)  
*Limnophila* species (ambulia)  
*Lobelia* species  
*Ludwigia* species  
*Myriophyllum* species  
*Najas* species (pondweed)  
*Nitella* species  
*Nomophila* species (temple plant)  
*Nuphar* species except Spatterdock  
*Nymphaea chromatella*  
*Rotala* species  
*Utricularia* species  
*Vesicularia dubyana* (java moss)

**GROUP C**

15 Points or counts as 1 species

*Aponogeton* species (except Madagascar Lace)  
*Cryptocoryne* species  
*Didiplis diandria* (water hedge)  
*Echinodorus* species (except Pygmy Chain Sword)  
*Eichhornia crassipes* (water hyacinth)

*Isoetes* species  
*Marsilea* species  
*Microsorium pteropus* (java fern)  
*Pistia* species  
*Trapa natans* (water chestnut)

**GROUP D**

20 Points or counts as 1 species

*Aldrovanda* species  
*Anubias* species  
Any marine plant  
*Aponogeton madagascariensis*  
*Lagenandra* species  
*Nuphar luteum*  
*Ottelia alismoides*

**GROUP E**

FLOWERING

Additional points for flowering will be the same as the propagation of the plant: e.g., *Cabomba* - 10 points, *Echinodorus* - 15 points

**GROUP F**

SEXUALLY REPRODUCING PLANTS

Extra points as for the species group as outlined in Group E above.

# WRITER'S AWARD PROGRAM (WAP)

(Revised December 2022)

## PURPOSES

- A. To encourage the writing of articles for *The Reflector* and the development of writing skills by CNYAS members.
- B. To acknowledge the accomplishment of CNYAS members contributions to the hobby through their writing and artistic efforts.
- C. To encourage a spirit of competition for the annual "Scaly Eraser Award."
- D. To increase information about the tropical fish hobby to CNYAS members.

## ELIGIBILITY

Participation is open to all CNYAS members. Articles by non-members will not qualify retroactively upon joining CNYAS. Articles required by CNYAS offers and committee chairs are not eligible.

## COMMITTEE

- A. The Writer's Award Program Committee shall consist of a chairperson and up to two (2) members. The Exchange Editor must be a member of the committee and may be the chairperson.
- B. The duties of the committee are:
  - 1. Maintain records of the points earned by all participants;
  - 2. Provide a report each month of the current standings, to *The Reflector* Editor, by the editor's deadline date.

## AWARDS

- A. The Scaly Eraser Award will be given to the CNYAS member who accumulates the highest number of points, as described in the points accumulation rules, for original articles and/or artwork published in *The Reflector* from May of one year through April of the next. Points for this award will include bonus points earned for previously published articles earned during the same time frame. This award shall be a plaque. Points must include at least one original article (i.e., not just mentions or reprints). If there are not at least two writers participating, the award will be given at the discretion of the Committee.
- B. Accumulated Points Awards shall consist of a plaque with the CNYAS Logo and four plates for inscribed levels achieved:

### WRITER'S AWARD:

Participants must accumulate 50 points, at least 30 of which are from the basic point rules.

### AUTHOR'S AWARD:

Participants must achieve the Writer's Award level and accumulate 100 points, at least 60 of which are from the basic point rules.

### WORDSMITH AWARD:

Participants must achieve the Author's Award and accumulate 200 points, at least 120 of which are from the basic point rules.

### PEN & QUILL AWARD:

Participants must achieve the Wordsmith Award and accumulate 400 points, at least 240 of which are from the basic point rules. To complete the requirements needed to earn this level, ONE of the following conditions must be met AFTER 400 points have been achieved.

1. Participants must have at least (2) articles reprinted in another club's publication.
2. Participants must have (1) article reprinted in another club's publication and 2 articles printed in *The Reflector*.
3. Participants must have (4) articles printed in *The Reflector*. These must be articles, not committee reports, pictures, etc.

### **PROFESSIONAL AWARD**

This separate award requires that the participant achieves at least the Wordsmith Award Level and have a previously unpublished article published in a national or international, for-profit publication. It shall consist of a plate that hangs from the bottom of the basic awards plaque.

### **POINTS ACCUMULATION**

- A. Points will be awarded based on the following schedule for articles first published in *The Reflector*, from May of one year through April of the following year.

- B. All point awards are at the sole discretion of the committee.
- C. Articles and/or artwork not published within the time frame, for any reason, will be included in the year's competition in which they occur.
- D. Co-authored articles will have the points split evenly.
- E. If any member should not renew his/her membership, accumulated points will be kept on an inactive list until such time as membership is renewed.

### **BASIC POINTS**

- 10 Required BAP or HAP articles.
- 10 Short articles (less than 50 words) such as Tips, etc.
- 20 Not required articles on any hobby-related subject, including letters to the editor, of more than 50 words.
- 20 Original hand-drawn artwork of fish or plants.
- 10 Other original drawings or cartoons, hand-drawn, or computer assisted.

### **BONUS POINTS**

For reprinted items appearing in publications that the Exchange Editor does not receive, it will be the responsibility of the author to provide proof to the committee by May 1 of the contest year.

- 20 A continuing column of six or more editions within the time frame of the contest. Awarded upon publication of the sixth (6th) edition each year that the column is written.
- 10 Articles reprinted in another club's publication (each reprinting).

- 6 Articles reviewed in another club's "Exchanges Column", each review.
- 10 Any artwork reprinted in another club's publication (each reprinting).
- 10 Articles mentioned or reviewed in a "for-profit" hobby publication.
- 30 Articles reprinted (with permission of the author) in a "for profit" hobby publication. These may be edited by the publication or the author but must be substantially the same. These points will be awarded only if the CNYAS and *The Reflector* are credited.

- 5 Original photos submitted with an article. Each original photo submitted earns five points.

Articles receiving awards in hobby publication award programs will be awarded bonus points based on the following schedule:

- 50 Article/Author of the Year
- 40 First place in category
- 30 Second place in category
- 20 Third place in category
- 10 Fourth place in category or honorable mention.



# MISCELLANEOUS FORMS

**AQUATIC HORTICULTURISTS AWARD PROGRAM (AHAP) REPORT FORM**

=====

PARTICIPANT'S NAME: \_\_\_\_\_

PLANT NAME: \_\_\_\_\_

(scientific)

(common)

Reference Source: \_\_\_\_\_ Page # \_\_\_\_\_

Horticulturists signature: \_\_\_\_\_ Date: \_\_\_\_\_

Witness Signature: \_\_\_\_\_ Date: \_\_\_\_\_

For Group E & F: \_\_\_\_\_ Date: \_\_\_\_\_

(AHAP Chairperson signature)

=====

REPRODUCTION TYPE (circle one): cutting; runner; seed; doubling; sexually; root division; other: \_\_\_\_\_

FILTRATION TYPE: \_\_\_\_\_ PLANT NOURISHMENT: Fish wastes: \_\_\_\_\_ Artificial: \_\_\_\_\_

BOTTOM MEDIUM: Sand/Gravel - Grade \_\_\_\_\_ Color \_\_\_\_\_ Epoxyed \_\_\_\_\_

Peat, Plant Plug, Potted Soil, other \_\_\_\_\_ Depth of gravel: \_\_\_\_\_

LIGHT SOURCE: Natural \_\_\_\_\_ Fluorescent (circle): Gro lux - warm white - cool white - Vita lite - Sea lux

Other: \_\_\_\_\_ Manufacturer: \_\_\_\_\_

Incandescent: Color \_\_\_\_\_ Duration \_\_\_\_\_ Wattage \_\_\_\_\_ # of bulbs/tank: \_\_\_\_\_

TANK: Gallons: \_\_\_\_\_ Temp. high \_\_\_\_\_ low \_\_\_\_\_ WATER: pH \_\_\_\_\_ DH \_\_\_\_\_ # of water changes/month \_\_\_\_\_

Percent of water changed \_\_\_\_\_% with (circle all that apply) Aged - Tap - Rainwater - Other: \_\_\_\_\_

DO YOU ADD SALT? \_\_\_\_\_ Amount per gallon \_\_\_\_\_

FISH SPECIES PRESENT: \_\_\_\_\_

WERE SNAILS PRESENT? \_\_\_\_\_ SPECIES \_\_\_\_\_

WAS THERE ALGAE PRESENT? \_\_\_\_\_

OTHER PLANTS IN THE AQUARIUM: \_\_\_\_\_

DO YOU MEDICATE YOUR FISH WITH THE PLANTS IN THE TANK? \_\_\_\_\_ If yes, what medicants? \_\_\_\_\_

COMMENTS ON HOW YOU REPRODUCED THIS PLANT: \_\_\_\_\_

\_\_\_\_\_  
\_\_\_\_\_

PROBLEMS: \_\_\_\_\_

\_\_\_\_\_

# CNYAS AHAP SPECIES AWARD FORM

Name: \_\_\_\_\_

**SPECIALTY GROUPS:** If a plant falls into more than one group, you must select the group in which you wish to place it. This decision is final and **may not** be reclassified at a later date.

**1. Small Floating Plants**

- 1. \_\_\_\_\_
- 2. \_\_\_\_\_
- 3. \_\_\_\_\_
- 4. \_\_\_\_\_

**2. Large Floating Plants**

- 1. \_\_\_\_\_
- 2. \_\_\_\_\_
- 3. \_\_\_\_\_
- 4. \_\_\_\_\_

**3. Mosses**

- 1. \_\_\_\_\_
- 2. \_\_\_\_\_

**4. Ferns**

- 1. \_\_\_\_\_
- 2. \_\_\_\_\_
- 3. \_\_\_\_\_

**5. Sagittaria**

- 1. \_\_\_\_\_
- 2. \_\_\_\_\_

**6. Vallisneria**

- 1. \_\_\_\_\_
- 2. \_\_\_\_\_

**7. Cryptocoyrne**

- 1. \_\_\_\_\_
- 2. \_\_\_\_\_
- 3. \_\_\_\_\_
- 4. \_\_\_\_\_

**8. Echinodorus**

- 1. \_\_\_\_\_
- 2. \_\_\_\_\_
- 3. \_\_\_\_\_

**9. Bunch Plants (*no more than 2 from same genus*)**

- 1. \_\_\_\_\_
- 2. \_\_\_\_\_
- 3. \_\_\_\_\_
- 4. \_\_\_\_\_
- 5. \_\_\_\_\_
- 6. \_\_\_\_\_
- 7. \_\_\_\_\_
- 8. \_\_\_\_\_

**10. Anubias**

- 1. \_\_\_\_\_
- 2. \_\_\_\_\_
- 3. \_\_\_\_\_

**11. Saltwater Plants**

- 1. \_\_\_\_\_
- 2. \_\_\_\_\_
- 3. \_\_\_\_\_

**12. Aponogeton**

- 1. \_\_\_\_\_

**13. Native New York Plants**

- 1. \_\_\_\_\_
- 2. \_\_\_\_\_

**14. Other**

- 1. \_\_\_\_\_



**BREEDER'S AWARD PROGRAM (BAP) REPORT FORM**

=====

BREEDER'S NAME: \_\_\_\_\_

SPECIES: \_\_\_\_\_

COMMON NAMES: \_\_\_\_\_ (SCIENTIFIC NAME) \_\_\_\_\_

Aquarist signature: \_\_\_\_\_ Date: \_\_\_\_\_

Witness Signature: \_\_\_\_\_ Date: \_\_\_\_\_

Class D or E only (at 1 week): \_\_\_\_\_ Date: \_\_\_\_\_

Witness Signature Completed Article ( ) ; Talk ( )

=====

**Date Requirement:**

Egglayer spawning \_\_\_\_\_ Hatching \_\_\_\_\_

Mouthbrooders release \_\_\_\_\_ Livebearer birth \_\_\_\_\_

**Information on Breeding:**

Tank size \_\_\_\_\_ Tank Temp. \_\_\_\_\_ Filter type \_\_\_\_\_

Water Change Frequency \_\_\_\_\_ Water Change Volume \_\_\_\_\_

Types of Food Feed (Circle all that apply) Live, Frozen, Flake, Freeze Dried, Other \_\_\_\_\_

Number of Eggs laid @ \_\_\_\_\_ Place Laid @ \_\_\_\_\_

Number of Fry at Birth/Hatching \_\_\_\_\_ Number of Fry at 30 days \_\_\_\_\_

**Aquarium Setup:** (Gravel, plants, other fish, etc.):

\_\_\_\_\_  
\_\_\_\_\_  
\_\_\_\_\_

**Parental Spawning Behavior:**

\_\_\_\_\_  
\_\_\_\_\_  
\_\_\_\_\_

**Ease of Raising Fry:**

\_\_\_\_\_  
\_\_\_\_\_  
\_\_\_\_\_

Points are NOT awarded for incomplete forms

# CNYAS BAP SPECIES AWARD FORM

Name: \_\_\_\_\_

SPECIALTY CLASSIFICATIONS: If a fish falls into more than one category, you must select the category in which you wish to record the spawn. This decision is final and **may not** be reclassified at a later date.

**1. Livebearers**

- 1. \_\_\_\_\_
- 2. \_\_\_\_\_
- 3. \_\_\_\_\_
- 4. \_\_\_\_\_
- 5. \* \_\_\_\_\_
- 6. \* \_\_\_\_\_

\* Non Poecilia or Xiphophorus species

**2. Anabantids (Other than Bettas)**

- 1. \_\_\_\_\_
- 2. \_\_\_\_\_
- 3. \_\_\_\_\_
- 4. \_\_\_\_\_

**3. Bettas**

- 1. \_\_\_\_\_
- 2. \_\_\_\_\_

**4. Barbs**

- 1. \_\_\_\_\_
- 2. \_\_\_\_\_
- 3. \_\_\_\_\_

**5. Rasboras**

- 1. \_\_\_\_\_
- 2. \_\_\_\_\_

**6. Tetras**

- 1. \_\_\_\_\_
- 2. \_\_\_\_\_

**7. Cichlid (Mouthbrooding)**

- 1. \_\_\_\_\_
- 2. \_\_\_\_\_
- 3. \_\_\_\_\_
- 4. \_\_\_\_\_

**8. Cichlids (Substrate Spawners)**

- 1. \_\_\_\_\_
- 2. \_\_\_\_\_
- 3. \_\_\_\_\_

**9. Killies (Mop Spawners)**

- 1. \_\_\_\_\_
- 2. \_\_\_\_\_

**10. Killies (Peat Spawners)**

- 1. \_\_\_\_\_
- 2. \_\_\_\_\_

**11. Catfish (Other than Corydoras, et al.)**

- 1. \_\_\_\_\_
- 2. \_\_\_\_\_

**12. Corydoras, Brochis, et al.**

- 1. \_\_\_\_\_
- 2. \_\_\_\_\_

**13. Cyprinids (Other than those listed elsewhere)**

- 1. \_\_\_\_\_
- 2. \_\_\_\_\_
- 3. \_\_\_\_\_
- 4. \_\_\_\_\_

**14. Goldfish & Koi**

- 1. \_\_\_\_\_
- 2. \_\_\_\_\_

**15. Native American Fish**

- 1. \_\_\_\_\_
- 2. \_\_\_\_\_

**16. Other**

- 1. \_\_\_\_\_
- 2. \_\_\_\_\_

# MONTHLY MEETING AUCTION FORM

(Please print)

Seller Name: \_\_\_\_\_

If non-member, please fill out information box below:

Address: \_\_\_\_\_

City/State: \_\_\_\_\_ Zip: \_\_\_\_\_

Phone: \_\_\_\_\_

	Item (Fish Name or Description)	Check for Donation	Selling Price
1			
2			
3			
4			
5			
6			
7			
8			
9			
10			
11			
12			
13			
14			
15			

**Treasurer Use Only:**

Seller Split: \$ \_\_\_\_\_

Ck #: \_\_\_\_\_ Date: \_\_\_\_\_

Total

## PAST OFFICERS & STAFF

Year	President	Vice President	Secretary	Treasurer	Editor
76-78	Terry Doyle	John Estees	Jim Sweeting	Bill Gottstein	Donna Melfi
78-79	John Estees	Terry Doyle	Paula Hallquist	Sally Van Camp	Barbara Edlund
79-80	Al Hallquist	Steve Van Camp	Paula Hallquist	Sally Van Camp	Paula Hallquist
80-81	Al Hallquist	Steve Van Camp	Paula Hallquist	Sally Van Camp	Paula Hallquist
81-82	Steve Van Camp	Dick Pitzeruse	Winnie Pitzeruse	Sally Van Camp	Sally Van Camp & Winnie Pitzeruse
82-83	Steve Van Camp	Dick Pitzeruse	Winnie Pitzeruse	Sally Van Camp	Sally Van Camp
83-84	Steve Van Camp	Ken Jackson	Brenda Slate	Sally Van Camp	Sally Van Camp
84-85	Michael Janus	Dan Weidman	Robert Earl	Steve Van Camp	John Bialy
85-86	Dan Weidman	Bill Schuetz	Sue Kotcher	Steve Van Camp	John Bialy
86-87	Dan Weidman	Dan Fisher	Sue Kotcher	Steve Van Camp	John Bialy
87-88	Dan Weidman	Robert Earl	Sue Kotcher	Steve Van Camp	John Bialy
88-89	Randy Siper	Robert Earl	Sue Kotcher	Steve Van Camp	Rose Anne Fazio
89-90	Randy Siper	Todd Marsh	Sue Kotcher	Steve Van Camp	Rose Anne Fazio
90-91	Randy Siper	Jeff Bilbrough	Sue Kotcher	Steve Van Camp	Rose Anne Fazio
91-92	Jeff Bilbrough	Ron Snead	Sue Kotcher	Steve Van Camp	Carlton Geckler & Jeff Bilbrough
92-93	Sue Kotcher	Ron Snead	Cherie Adams	Steve Van Camp	Jeff Bilbrough & Sam Coffey
93-94	Sue Kotcher	Sherry Taylor	John Bialy	Steve Van Camp	Jeff Bilbrough & Sam Coffey
94-95	Sue Kotcher	Tuck Maloney	Cherie Adams	Steve Van Camp	Jeff Bilbrough & John Bialy
95-96	Bill Schuetz	Jeff Bilbrough	Cherie Adams	Steve Van Camp	Ken Zauter & John Bialy
96-97	Bill Schuetz	Fred Allen	Cherie Adams	Steve Van Camp	John Bialy
97-98	Bill Schuetz	Bruce Van Nort	Cherie Adams	Steve Van Camp	John Bialy
98-99	Bruce Van Nort	Dan Deinhart	Debbie Van Nort	Steve Van Camp	Jeff Stokes
99-00	Bruce Van Nort	Marty Muldowney	Debbie Van Nort	Steve Van Camp	Jeff Stokes
00-01	Bruce Van Nort	Marty Muldowney	Debbie Van Nort	Steve Van Camp	De Ann White
01-02	Winnie Pitzeruse	Stan Domanowski	Ray Spahn	Steve Van Camp	Jennifer Lioto
02-03	Winnie Pitzeruse	Bryan Stevens	Ray Spahn	Steve Van Camp	Jennifer Lioto
03-04	Ron Fabiny	Winnie Pitzeruse	Ray Spahn	Steve Van Camp	Jennifer Lioto
04-05	Ron Fabiny	Winnie Pitzeruse	Ray Spahn	Steve Van Camp	Jennifer Lioto
05-06	Ron Fabiny	Winnie Pitzeruse	Ray Spahn	Steve Van Camp	Jennifer Lioto
06-07	Ron Fabiny	Mary Teelin	Ray Spahn	Steve Van Camp	Jennifer Lioto
07-08	Ron Fabiny	Mary Teelin	Ray Spahn	Steve Van Camp	Len Futterman
08-09	Ron Fabiny	Jay & Barb Bovair	Ray Spahn	Steve Van Camp	Len Futterman & Mary Teelin
09-10	Ron Fabiny	Jay & Barb Bovair	Ray Spahn	Steve Van Camp	Len Futterman & Mary Teelin
10-11	Len Futterman	Bill Armstrong	Ray Spahn	Steve Van Camp	Chris Fowler
11-12	Len Futterman	Bill Amrstrong	Ray Spahn	Steve Van Camp	Chris Fowler
12-13	Len Futterman	Bill Armstrong	Ray Spahn	Steve Van Camp	Chris Fowler
13-14	Len Futterman	Bill Armstrong	Ray Spahn	Steve Van Camp	Chris Fowler
14-15	Len Futterman	Bill Armstrong	Denise Baird	Steve Van Camp	Chris Fowler
15-16	Len Futterman	Bill Armstrong	Denise Baird	Steve Van Camp	Chris Fowler / Katie Smith
16-17	Louis Kinney	Bill Armstrong	Denise Baird	Steve Van Camp	Katie Smith
17-18	Louis Kinney	Bill Armstrong	Denise Baird	Steve Van Camp	Katie Smith
18-19	Bill Yard	Rich Tomaino	Denise Baird	Steve Van Camp	Katie Smith
19-20	Bill Yard	Rich Tomaino	Mary Teelin	Ron Fabiny	Katie Smith
20-21	Bill Yard	Rich Tomaino	Mary Teelin	Ron Fabiny	Mike Vormwald
21-22	Ron Fabiny	Len Futterman	Mary Teelin	Bob Kotcher	Mike Vormwald
22-23	Ron Fabiny	Len Futterman	Mary Teelin	Bob Kotcher	Doug Hillman

## BOARD OF DIRECTORS

- 1976–79: Dick Baker, Stu Bobbett, Art Edlund, Al Hallquist, Steve Moore, Clark Paro, Steve Van Camp, John Woolsey, John Wyman
- 1979–80: Ron Zeigler, Winnie Pitzeruse, Art Edlund, Stu Bobbett, Art Edlund
- 1980–81: David Balfourt, Winnie Pitzeruse, William Chapman, Stu Bobbett, Bette Hoffmeyer
- 1981–82: David Balfourt, Douglas Foley, Ken Jackson, Stu Bobbett, Bette Hoffmeyer, Michael Jackson
- 1982–83: Stu Bobbett, Ken Jackson, Michael Janus, Vince Joly, Brenda Slate
- 1983–84: Stu Bobbett, Helmut Fleisch, Michael Janus, Vince Joly, Bill Schuetz
- 1984–85: Stu Bobbett, Ernie Barnett, Brian Flickinger, Ken Jackson, Bruce Raver, Bill Schuetz  
Stu Bobbett, Kathy Wrotniak, Mike Janus, Bob Earl, Carl Glenister, Dave Szholnik
- 1986–87: Stu Bobbett, Kathy Wrotniak, Rose Anne Fazio, Bob Earl, Carl Glenister, Sally Van Camp
- 1987–88: Stu Bobbett, Dave Sears, Joy Sears, Bill Schuetz, Randy Siper, Kathy Wrotniak
- 1988–89: Stu Bobbett, Carl Glenister, Todd Marsh, Don Park, Risa Siper, Dan Weidman
- 1989–90: Stu Bobbett, Gail Erb, Nanette Hayner, Don Park, Dan Weidman, Kathy Wrotniak
- 1990–91: Tony Alesci, Nanette Hayner, Don Park, Ron Snead, Frank Watson
- 1991–92: Tony Alesci, Rose Anne Fazio, Nanette Hayner, Don Park, Sherry Taylor
- 1992–93: Rose Anne Fazio, Nanette Hayner, Laura Hopkins, Tuck Maloney, Don Park
- 1993–94: Alan Beckwith, Tuck Maloney, Don Park, Ron Snead, Ray Spahn
- 1994–95: Carl Glenister, Don Park, Randy Siper, Ray Spahn, Ron Snead
- 1995–96: Carl Glenister, Sue Kotcher, Tuck Maloney, Marty Muldowney, Ray Spahn
- 1996–97: Bill Brogan, Sue Kotcher, Tuck Maloney, Marty Muldowney, Ray Spahn
- 1997–98: John Bagneski, Marilyn Bevilaqua, Bill Brogan, Tuck Maloney, Ray Spahn
- 1998–99: John Bagneski, Bill Brogan, Tuck Maloney, Jennifer Pitzeruse, Ray Spahn
- 1999–00: John Bagneski, Bill Brogan, Vinny Guarno, Bob Hiesey, Jennifer Lioto, Ray Spahn
- 2000–01: Bill Brogan, Stan Domanowski, Andy Giraud, Bob Hiesey, Ray Spahn
- 2001–02: Bill Brogan, Andy Giraud, John Miller, Bryan Stevens
- 2002–03: Bill Brogan, Robert Earl, Andrea Groetz, Sue Kotcher, John Miller
- 2003–04: Robert Earl, Andrea Groetz, Sue Kotcher, Bryan Stevens, Mary Teelin
- 2004–05: A.J. Gulisano, Sue Kotcher, Joy Richmond, Mary Teelin
- 2005–06: Sue Kotcher, Mary Teelin, Joy Richmond, Tony & Janet Wisneski
- 2006–07: Sue Kotcher, Joy Richmond, Tony & Janet Wisneski, Winnie Pitzeruse
- 2007–08: Sue Kotcher, Tony & Janet Wisneski, Bill Armstong, Ray Sanders, Winnie Pitzeruse
- 2008–09: Herschel Beeman, Sue Kotcher, Tony & Janet Wisneski, Bill Armstong, Ray Sanders, Winnie Pitzeruse
- 2009–10: Bill Armstrong, Herschel Beeman, Sue Kotcher, Wayne Murray, Winnie Pitzeruse, Tony & Janet Wisneski
- 2010–11: Jay Bovair, Sue Kotcher, Winnie Pitzeruse, Mary Teelin, Wayne Murray
- 2011–12: Sue Kotcher, Ross Lavare, Winnie Pitzeruse, Mary Teelin, Wayne Murray
- 2012–13: Tom O'Connor; Sue Kotcher, Ross Lavare, Winnie Pitzeruse, Mary Teelin, Wayne Murray
- 2013–14: Denise Baird, John Cooke, Tom O'Connor, Sue Kotcher, Wayne Murray, Winnie Pitzeruse, Mary Teelin
- 2014–15: Pam Hagrman, Sue Kotcher, Wayne Murray, Winnie Pitzeruse, Mary Teelin
- 2015–16: Pam Hagrman, Sue Kotcher, Wayne Murray, Winnie Pitzeruse, Mary Teelin
- 2016–17: Anastasia Keville, Sue Kotcher, Mary Teelin, Pauline Thompson, Bill Yard
- 2017–18: Herschel Beeman, Len Futterman; Anastasia Keville, Sue Kotcher, Mary Teelin
- 2018–19: Herschel Beeman, Ron Fabiny, Arnaud Germain, Sue Kotcher, Mary Teelin
- 2019–20: Len Futterman, Sue Kotcher, Denise Baird, Herschel Beeman, Arnaud Germain
- 2020–21: Len Futterman, Sue Kotcher, Denise Baird, Herschel Beeman, Arnaud Germain
- 2021–22: Denise Baird, Arnaud Germain, Brian Bowers, Ron Alexander, Griffin Hunt
- 2022–23: Denise Baird, Herschel Beeman, Arnaud Germain, Brian Bowers, Ron Alexander, Clifford Crain

## COMMITTEES

Year	Bowl Show	BAP	Membership	AHAP	Programs
76-77	Robert Hurd		Art Edlund		
77-78					John Estees
78-79					Terry Doyle
79-80	Jim Sweeting		Rose Money		Steve Van Camp
80-81	Winnie Pitzeruse	Rich Pitzeruse	Steve Van Camp		Steve Van Camp
81-82	Winnie Pitzeruse	Rich Pitzeruse	Steve Van Camp		Dick Pitzeruse
82-83	Michael Janus	Rich Pitzeruse	Steve Van Camp	Vince Joly	Dick Pitzeruse
83-84	Michael Janus	Rich Pitzeruse	Steve Van Camp	Vince Joly	Ken Jackson
84-85	Ken Jackson	Sally Van Camp	Steve Van Camp	Kathy Wrotniak	Dan Weidman
85-86	Dan Fisher	Sally Van Camp	Steve Van Camp	Kathy Wrotniak	Bill Schuetz
86-87	Carl Glenister	Sally Van Camp	Steve Van Camp	Kathy Wrotniak	Dan Fisher
87-88	Dave Sears & Sue Kotcher	Sally Van Camp	Steve Van Camp	Kathy Wrotniak	Bob Earl
88-89	Sue Kotcher	Sally Van Camp	Steve Van Camp	Kathy Wrotniak	Bob Earl
89-90	Sue Kotcher	Sally Van Camp	Steve Van Camp	Kathy Wrotniak	Todd Marsh
90-91	Tony Alesci & John Fabbri	Sue Kotcher	Steve Van Camp	Kathy Wrotniak	Jeff Bilbrough
91-92	Cherie Adams	Sue Kotcher	Steve Van Camp	Kathy Wrotniak	Ron Snead
92-93	Lee Brink	Sue Kotcher	Steve Van Camp	Kathy Wrotniak	Ron Snead
93-94	Lee Brink	Sue Kotcher	Steve Van Camp	Kathy Wrotniak	Sherry Taylor
94-95	Tony & Janet Wisneski	Sue Kotcher	Steve Van Camp	Laura Hopkins	Tuck Maloney
95-96	Carlton Jackson	Sue Kotcher	Steve Van Camp		Jeff Bilbrough
96-97	Phil Oakes	Tuck Maloney	Steve Van Camp	Fred Allen	Fred Allen
97-98	<vacant>	Tuck Maloney	Steve Van Camp	Fred Allen/Phil Oakes	Bruce Van Nort
98-99	John Wubolt	Tuck Maloney	Steve Van Camp	Phil Oakes	Dan Deinhart
99-00	Cheryl Stevens	Tuck Maloney	Steve Van Camp	Phil Oakes	Marty Muldowney
00-01		Winnie Pitzeruse	Steve Van Camp	Jennifer Lioto Ray Spahn	Marty Muldowney
01-02	John Miller	Winnie Pitzeruse	Steve Van Camp	Jennifer Lioto Ray Spahn	Stan Domanowski
02-03	John Miller	Winnie Pitzeruse	Steve Van Camp	Jennifer Lioto Ray Spahn	Bryan Stevens
03-04	Len Futterman	Winnie Pitzeruse	Steve Van Camp	Ray Spahn	Winnie Pitzeruse
04-05	Len Futterman	Winnie Pitzeruse	Steve Van Camp	Ray Spahn	Winnie Pitzeruse
05-06	Len Futterman	Winnie Pitzeruse	Steve Van Camp	Ray Spahn	Winnie Pitzeruse
06-07	Ray Spahn	Winnie Pitzeruse	Steve Van Camp	Ray Spahn	Mary Teelin
07-08	Ray Spahn	Winnie Pitzeruse	Steve Van Camp	Ray Spahn	Mary Teelin
08-09	Ray Spahn	Winnie Pitzeruse	Ray Sanders	Ray Spahn	Jay & Barb Bovair
09-10	Ray Spahn	Winnie Pitzeruse	Wayne Murray	Ray Spahn	Jay & Barb Bovair
10-17	Ray Spahn	Winnie Pitzeruse	Wayne Murray	Ray Spahn	Bill Armstrong
17-18	James Sandler	Bill Yard	Wayne Murray	Chris Taylor	Bill Yard
18-19	James Sandler	Bill Yard	Len Futterman	Chris Taylor	Bill Yard
19-20	Arnaud Germain	Bill Yard	Len Futterman		Bill Yard
20-21	Arnaud Germain	Bill Yard/Herschel Beeman	Len Futterman		Len Futterman
21-22	Arnaud Germain	Herschel Beeman	Len Futterman		Len Futterman
22-23	Arnaud Germain	Herschel Beeman	Denise Baird		Len Futterman

Year	Exchanges	Refreshments	Annual Auction	FAAS Delegate	WAP Writers Award
77-78			John Estees		
78-79			Al Hallquist		
79-80			Al Hallquist		
80-81			Steve Van Camp		
81-82	Rose Anne Fazio		Steve Van Camp		
82-83	Rose Anne Fazio	Stu Bobbett	Steve Van Camp	Winnie Pitzeruse	
83-84	Rose Anne Fazio	Stu Bobbett	Dan Weidman	Sally Van Camp	
84-85	Rose Anne Fazio	Linda Fleisch	Dan Weidman	Sally Van Camp	
85-86	Rose Anne Fazio	Sherry Bresett	Steve Van Camp	Sally Van Camp	
86-87	Sherry Bresett	Don Park	Steve Van Camp	Sally Van Camp	
87-88	Sherry Bresett	Don Park	Steve Van Camp	Sally Van Camp	
88-89	Sherry Bresett	Don Park	Steve Van Camp	Risa Siper	
89-90	Sherry Bresett	Don Park	Steve Van Camp	Risa Siper	
90-91	Sherry Bresett	Don Park	Steve Van Camp	Risa Siper	
91-92	Sherry Bresett	Don Park	Steve Van Camp	Ray Spahn	
92-93	Sherry Bresett-Taylor	Don Park	Steve Van Camp	Ray Spahn	
93-94	Ray Spahn	Don Park	Steve Van Camp	Ray Spahn	
94-95	Ray Spahn	Don Park	Steve Van Camp	Bill Brogan	
95-96	Ray Spahn		Steve Van Camp	Bill Brogan	Jeff Bilbrough
96-97	Ray Spahn		Steve Van Camp	Bill Brogan	Jeff Bilbrough
97-98	John Wubbolt	Vinny Guarino & Bob Heisey	Steve Van Camp	Bill Brogan	
98-99	John Wubbolt	Vinnie Guarino & Bob Heisey & Dan Stokes	Steve Van Camp	Bill Brogan	John Wubbolt
99-00	John Wubbolt	Daniel Stokes	Bruce Van Nort & Steve Van Camp	Bill Brogan	John Wubbolt
00-01	DeAnn White		Steve Van Camp	Bill Brogan	John Wubbolt
01-02	Jennifer Lioto	Bill Yard	Steve Van Camp	Bill Brogan	Rich Pitzeruse
02-03	Jennifer Lioto	Bill Yard	Steve Van Camp	Bill Brogan	Rich Pitzeruse
03-04	Bryan Stevens Sue Kotcher	Andrea Groetz	Steve Van Camp	Bill Brogan	Bryan Stevens Sue Kotcher
04-05	Sue Kotcher	Mary Teelin	Steve Van Camp	Bill Brogan	Sue Kotcher
05-2018	Sue Kotcher	Mary Teelin	Steve Van Camp		Sue Kotcher
18-19	Sue Kotcher	Darcy Lee			Sue Kotcher
19-20	Sue Kotcher	Darcy Lee	Steve Van Camp		Sue Kotcher
20-21	Sue Kotcher		Steve Van Camp		Arnaud Germain
21-22	Clifford Crain		Ron Fabiny		Arnaud Germain
22-23	Clifford Crain				Arnaud Germain

<b>Year</b>	<b>Public Relations</b>	<b>Librarian</b>
76-78	Steve Moore	
78-79	Arthur Edlund	
79-80	Robert Preske	
80-81		
81-84	Rose Anne Fazio	Rose Anne Fazio
84-86	Sue Kotcher	Rose Anne Fazio
86-90	Marilyn Bevilaqua	Sherry Bresett-Taylor
90-91	Marilyn Bevilaqua & John Fabbri	Sherry Bresett-Taylor
91-95	John Fabbri	Sherry Bresett-Taylor
95-97	Tom Somlo	
97-98	Anna Carlson	
98-99	Anna Carlson	Ray Spahn
99-01	Tom Somlo	
01-02	Bill Schuetz & Ron Fabiny	
02-03	Ron Fabiny	
03-04	Robert Lloyd	Andrea Groetz
04-05	Len Futterman	Herschel Beeman
05-07	Len Futterman	
07-08	Victor Coogan	
08-10	Sigrid Rademacher	Jay & Barb Bovair
10-11	Sigrid Rademacher	Jay Bovair
11-12	Jenn Lee	
12-13	Jenn Lee/Ross Lavare	
13-14	Jenn Lee/Ross Lavare	Chris Fowler
14-15	Jenn Lee/Ross Lavare; Louis Kenney	Chris Fowler
15-16	Louis Kinney	Chris Fowler
16-20	Chris Taylor	Chris Fowler
20-21		
21-22		
22-23		



## MISCELLANEOUS COMMITTEES AND EVENTS

- CAOAC Liaison  
John Bialy (1985–1987)  
Steve Van Camp (1987–1992)
- Executive Guidelines:  
Carl Glenister (1997–2004)
- NY Penn Council:  
Jeff Bilbrough (1992–1997)
- Webmaster  
Bryan Stevens  
Rich Pitzeruse/Ron Fabiny  
Jenn Lee  
Chris Taylor  
Chris Taylor & Chris Allen (2019–2021)  
Ron Fabiny (2021–2022)
- Constitution:  
Sally Van Camp (1991–1992)
- Parliamentarian:  
Ron Snead (1993–2000)  
Sue Kotcher (2000–2022)
- Hospitality:  
Nanette Hayner (1991–1994)  
Ray Spahn (1994–1995)  
Tuck Maloney (1995–2000)  
Mary Teelin (2004–2018)  
Darcy Lee (2018–2019)
- Assistant Secretary  
Sue Kotcher (2002–2019)
- NEC Representative:  
Jenn Lee (2011–2015)  
Arnaud Germain (2016–2023)
- FAAS Fall Festival of Fishes Convention  
(Hamburg NY) Hosted by Chautauqua County  
Aquarium Association, CNYAS & Southtowns  
Fish Fanciers
- Tropical Fish Shows held in 1991, 1992 & 1993  
(Beaver Lake Nature Center, B'ville, NY)
- Swap meet:  
Ron Fabiny and Bill Yard (2021)  
Len Futterman and Brian Bowers (2022)

## SPECIAL AWARDS

Year	FAAS	Special Recognition/Outstanding Service Awards
1981	Rose Anne Fazio	
1982	Stu Bobbett	
1983	Steve Van Camp	
1984	Sally Van Camp	Steve Van Camp: President's Achievements
1985	John Bialy	
1986	Bill Schuetz	
1987	Sue Kotcher	
1988	Marilyn Bevilaqua	
1989	Don Park	
1990	Randy Siper	
1991	Tuck Maloney	
1992	John Fabbri	
1993	Steve Van Camp	
1994	Sherry Taylor	Sue Kotcher: President's Achievements
1994		John Miller
1995	Sue Kotcher	
1996	Jeff Bilbrough	
1997	Ray Spahn	
1998	Cherie Adams	
1999	Winnie Pitzeruse	
2000	Bryan Stevens	
2001	John Miller	
2003	Jennifer Lioto	
2004	Ron Fabiny	
2005	Ron Lioto	
2006	Ron Fabiny	
2007	Ron Fabiny	
2008	Len Futterman	
2009	Rich Pitzeruse	
2010	Herschel Beeman	Ron Fabiny: President's Achievements (2003-2010)
2011		Chris Fowler: Editor
2012		Jenn Lee: Webmaster
2013		Tom O'Connor
2014		Sally Van Camp
2015		Bill Armstrong
2016		Chris Taylor
2016		Len Futterman: President's Achievements (2010-2016)
2017		Chris Taylor
2018		Wayne Murray
2018		Ron Alexander: Valued Member of the Year (new 2018)
2018		Louis Kinney: President's Achievements (2016-2018)
2019		Steve Van Camp: Lifetime Achievement
2020		Sally Van Camp: Lifetime Achievement
2021		
2022		Ron Fabiny